

Your Webinar Presenters for
=== MECH Preparation Workshop Overview===



JOHN E. HOHMAN, PhD
www.mech-certification.org
Dr. Hohman is the National
Director of MECH (Mechanic
Evaluation and Certification for
Healthcare)



JAMES L. HILDEBRAND
jhildebrand@luthermanor.org
***Jim is the Wisconsin MECH
Program Manager***

The MECH Healthcare Mechanic Preparation Workshop

- Overview -



Preparing for and
setting up MECH
Certification testing.

Content & Schedule

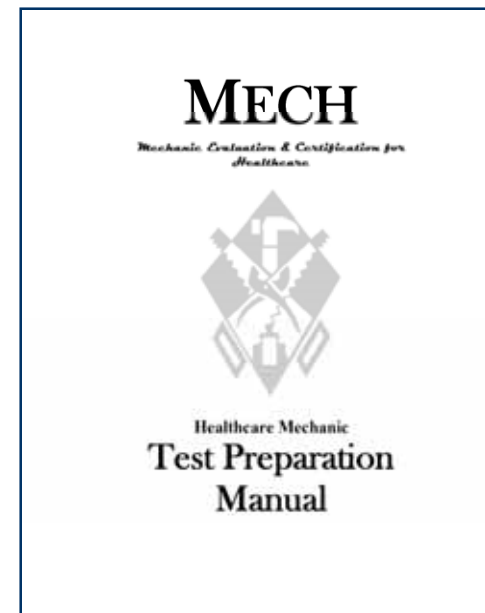
- Introductions
- Background of the MECH Program
- Review of the MECH Prep Guide
- Structure of the MECH Test
- How to Take the Test
- Testing Your Knowledge
- Review of Study Materials
- Expectations on Test Day
- Scoring & Processing
- Recertification
- Summary – Q&A.

Background of the MECH Program

- What does MECH Stand for?
- How did it get started?
- What is it used for?
- How do I benefit?.

Review of the Prep Manual

- Table of Contents
 - Preparing for the MECH Certification Test
(more info on the next slide)
 - Structure of the Test
 - Taking the Test
 - Testing your Knowledge
 - Appendices A-E.



Preparing for the Test



- Individual
 - Peers
 - Technical Experts
 - Review of personally gathered information to include textbooks, training manuals, etc
- Group
 - Work groups
 - Suppliers and Mfg Representatives
- Institutional
 - Mechanic Meetings
 - Technical training inside and outside the institution
 - Community College or Technical Trade Center.

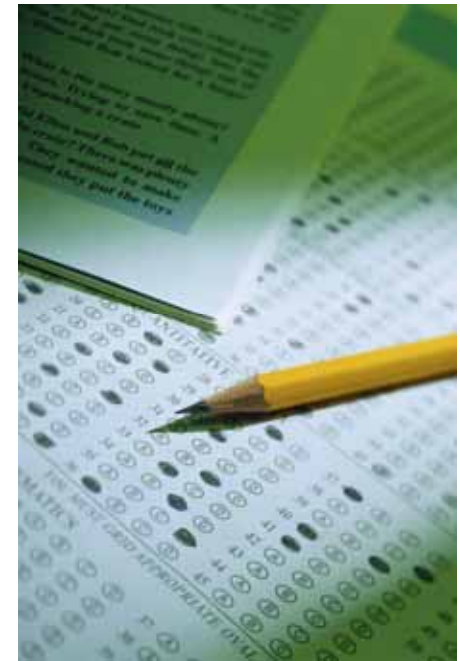
Structure of the Test

- Plumbing
- Carpentry
- Electrical
- General Maintenance
- HVAC Systems
- Power Plant/Boiler
- Safety Support Services.

Category from Job & Task Analysis	Questions
	Total Questions = 100
Plumbing	14
Carpentry	11
Electrical	20
General Maintenance	24
HVAC Systems	11
Power Plant/Boiler	11
Safety/Support Services	9

How to Take the Test – opening the book

- Look through the entire test before starting
- Identify the number of questions on the test and relate them to the time you are allotted
- It will generally take one minute to complete one question
- Note where pictures, charts and graphs are located
- Note any breaks or sections
- Look for the easy sections or questions and start there
- If you are using a separate answer sheet, continually check to see that you are placing the answers with the right question numbers.





How to Take the Test – answering questions

- Read the question or statement thoroughly
- Read each of the possible answers thoroughly
- Relate each possible answer to the question and ask yourself if it is logical
- Eliminate each answer that is not possible
- Look for clues in the remaining possible responses
- If you cannot decide which answer is “most” correct, leave the question and finish all other questions on the test before returning to the question.

Testing Your Knowledge

- There are two types of mini-tests
 - Category Tests: Cat-Test
 - Comprehensive Test: Comp-Test
- Use both to determine your strengths and weaknesses.

14%	Plumbing
11%	Carpentry
20%	Electrical
24%	General Maintenance
11%	HVAC Systems
11%	Power Plant/Boiler
9%	Safety/Support Services

Review of Study Materials



- Appendix D
 - Online information
 - Online books for sale
 - Books in Libraries
 - Material on hand
 - Books
 - Technical literature
 - Manufacturer's literature
 - Equipment information.

Expectations on Test Day

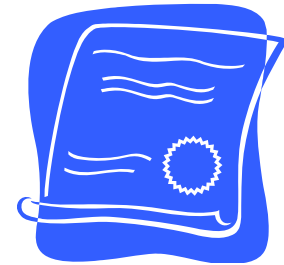
- Arrive early
- Bring identification
- Bring a basic calculator
- Instructions will be given verbally
- Materials will be distributed (test, answer sheet, scrap paper if requested)
- Two hours time allotted to take the test
- All materials will be gathered



(Review Appendix C – Proctor Duties).

Scoring and Processing

- You **MUST** marked the answer sheet legibly!
- All material is shipped to the scoring center
- Time to process – approximately two weeks.
- Notification, regarding the outcome, will come to you by the postal service
- If you meet the cut-score requirements, you will receive:
 - Letter of congratulation
 - Certificate
 - Score report
 - MECH arm patch.



MECH Contact Information

- MECH National Office
www.mech-certification.org
(616) 662-1315
- Wisconsin MECH Coordinator
James L. Hildebrand
Director of Plant Operations
Luther Manor
4545 N. 92nd Street
Milwaukee, WI 53225
(414) 464-3880 x519

Your Questions Please

