

To: Pre-Construction Risk Assessment Committee

From: Construction Services, Facilities Services

Re: Interim Life Safety Measure Plan Approval for Construction [\(Lower Level Midelfort Building West, Family Medicine Residency Project\)](#)

---

Due to the construction in [\(Lower Level Midelfort Building West, Deli & RIS Area\)](#), effective February 8<sup>th</sup> to August 30<sup>th</sup> an Administration imposed Interim Life Safety Measure (ILSM) must be enacted to compensate for temporary hazards posed by 2000 NFPA 101® Life Safety Code deficiencies. An ILSM must be implemented in the following area(s):

*Lower Level Midelfort Building West Pediatrics, White Conference Room, Switch Board, and Mail room.*  
*Lower Level Midelfort Building East Physical Therapy.*

This plan requires approval by the Department Director, PCRA Committee Chair and/or the Director of Facilities Services. Failure to enact an ILSM may result in a loss of Joint Commission accreditation.

Please review and sign.

PCRA Committee Chair:\_\_\_\_\_ Date:\_\_\_\_\_

Department Director:\_\_\_\_\_ Date:\_\_\_\_\_

Director of Facilities Services:\_\_\_\_\_ Date:\_\_\_\_\_

# Employees Should Know...

## SITUATION

Demolition of the kitchen deli and RIS (rooms L031 through L107) will begin on February 8<sup>th</sup> for the future Family Residency Project. There will saw cutting the concrete floor and demolish of interior walls that will cause dust and debris. This will cause noise during normal business hours. We will be building back interior walls, electrical, plumbing, sprinkler, and HVAC to accommodate the project needs.

## BACKGROUND

### PURPOSE –

Perform demo and build back of the deli kitchen & RIS area to prepare for the Family Residency project.

## ASSESSMENT

### Infection Control Measures

Infection Control Measure “B” will be used for the demo and build back of Family Residency. Hard wall barriers will be installed that will restrict the means of egress through Deli area, negative pressure will be maintained, walk-off mats will be used and debris removal will be in covered containers.

### Effected Life Safety Measures –

With building of construction barrier in corridor L030 the White Conference Room will not have two remote exits. Staff will be required to exit to stairwell 200.

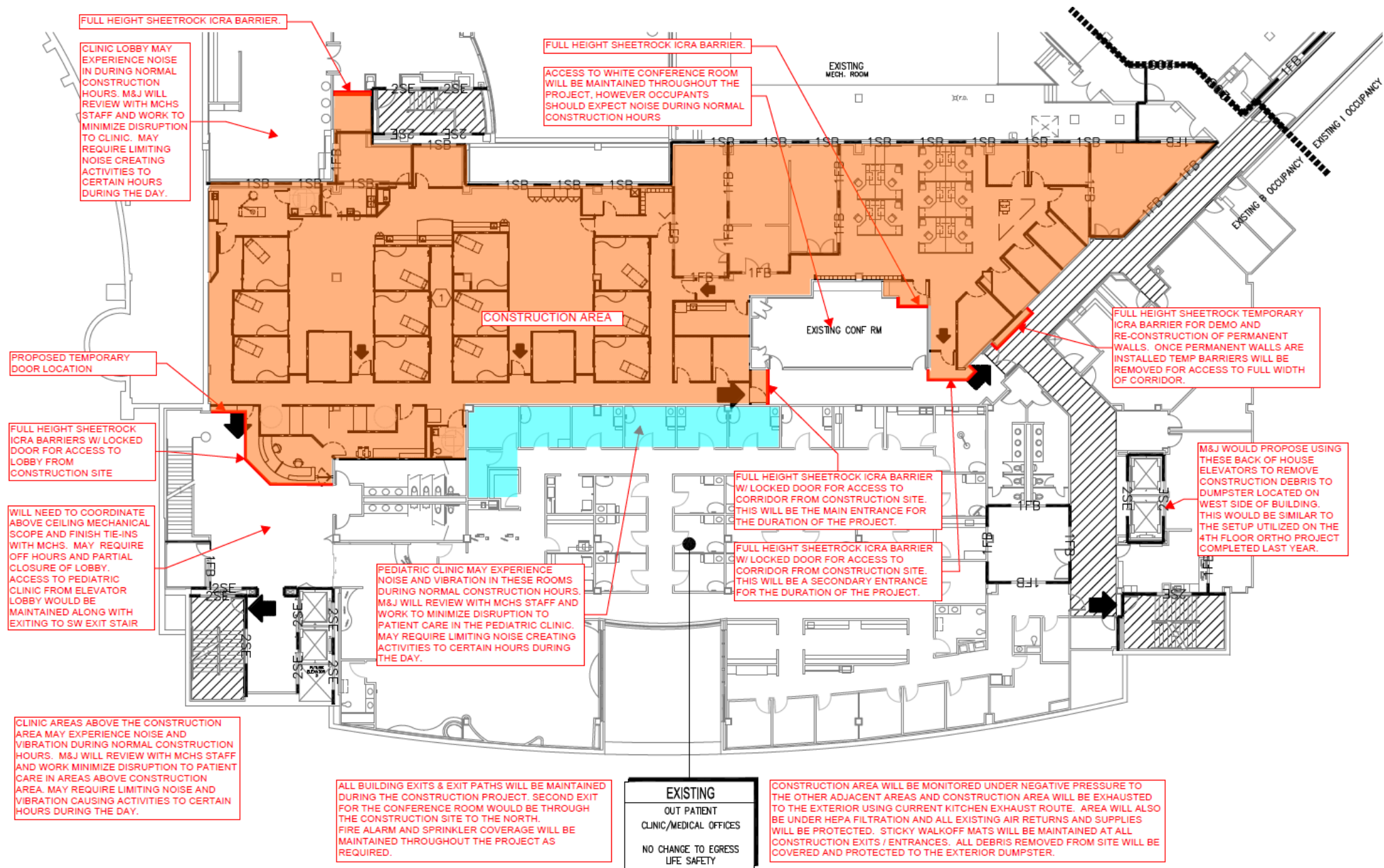
### Effected Area (See Map)

## RECOMMENDATION

Please be aware of the work being performed. Contact Bob at 715-579-4744 with any questions/concerns or any life safety concerns.

# INTERIM LIFE SAFETY MEASURE (ILSM) MATRIX

|   |   | Interim Life Safety Measure   |   |   |   |   |   |   |   |   |   |   |   |   |   |   |
|---|---|---|---|---|---|---|---|---|---|---|---|---|---|---|---|---|
| <b>Project No.</b> <u>MR15 - 8347</u><br><b>Description:</b> <u>Family Medicine Residency</u><br><b>Effective Date:</b> <u>February 8<sup>th</sup> – August 30<sup>th</sup></u><br><b>Area(s) Effected:</b> <u>Pediatrics, Mail Room, Switch Board, White Conference Room and Physical Therapy.</u><br><b>Reviewed:</b> <u>Eric Vavra</u><br><b>Existing Significant Life Safety Code Deficiencies or Conditions as a Result of Construction</b> <ul style="list-style-type: none"> <li>Projects or work requests that are less than a week in length, which do not reduce the level of Life Safety Code® minimum requirements, are not significant.</li> <li>An activity which takes place in a room with an intact door and which does not penetrate walls generally does not require an ILSM.</li> <li>Activity that affects doors or walls for less than one shift generally does not require an ILSM.</li> <li>Activities that block or compromise exit stairs, required exit corridors, or exit discharge areas for more than one shift generally require an ILSM.</li> </ul> |   | <b>a) Facility notifies the fire department when a fire alarm or sprinkler system is out of service for more than four hours</b><br><b>b) Facility initiates a fire watch when a fire alarm or sprinkler system is out of service for more than four hours</b><br><b>c) Facility post signage identifying the location of alternate exits</b><br><b>d) Facility has written interim life safety measure (ILSM) plan</b><br><b>e) Exits in affected area are inspected on a daily basis</b><br><b>f) Temporary but the equivalent fire alarm and detection systems are used when a fire system is impaired</b><br><b>g) Additional firefighting equipment is provided when needed</b><br><b>h) Temporary construction partitions are smoked tight and made of material that will not contribute to development or spread of fire</b><br><b>i) Surveillance of buildings, grounds, and equipment are increased with special attention to construction areas and storage (includes FD</b><br><b>j) Facility enforces storage, housekeeping, and debris removal practices that reduce the flammable and combustible fire load</b><br><b>k) Facility provides additional training on the use of firefighting equipment to those who work in the Facility as needed</b><br><b>l) Facility conducts one additional fire drill per shift per quarter in the affected areas</b><br><b>m) Temporary systems are inspected and tested monthly</b><br><b>n) Facility conducts educations to promote awareness of building deficiencies, hazards, and temporary measures for fire safety</b><br><b>o) Facility trains those who work in a Facility to compensate for impaired fire safety features</b> |   |   |   |   |   |   |   |   |   |   |   |   |   |   |
| <b>SIGNIFICANT LIFE SAFETY DEFICIENCIES</b>   |   |   |   |   |   |   |   |   |   |   |   |   |   |   |   |   |
| Lacking a code complying smoke barrier  |   |   | X | X |   | X | X | X | X |   | X | X | X | X | X |   |
| Fire exit stairs discharge improperly   |   |   | X | X | X |   |   |   |   |   |   |   |   | X |   |   |
| Excessive travel distance to an approved exit   |   |   | X | X | X |   |   |   | X | X |   |   |   |   |   |   |
| Lack of two remote exits or corridors   |   |   | X | X |   |   |   |   | X | X |   |   |   | X |   |   |
| Nonconforming building construction type  |   |   |   | X |   | X | X | X | X | X | X | X | X | X | X | X |
| Improperly protected vertical openings  |   |   |   | X |   | X |   | X | X | X |   | X |   |   |   |   |
| Large penetrations in smoke or fire barriers  |   |   |   | X |   |   |   |   | X | X |   | X |   |   |   |   |
| Corridor walls do not extend to the structure   |   |   | X | X |   | X |   | X | X | X |   | X |   |   |   |   |
| Hazardous area not properly protected   | X | X   |   | X |   |   | X |   | X | X | X |   |   |   |   | X |
| Blocking off an approved exit   |   |   | X | X | X | X |   |   | X | X | X | X |   | X |   |   |
| Renovation of an occupied floor   |   |   | X | X | X | X | X | X | X | X | X | X |   | X | X |   |
| Replacing fire alarm system (out-of-service)  | X | X   |   | X |   | X |   |   | X | X | X | X | X | X | X |   |
| Installing sprinkler system (out-of-service)  | X | X   |   | X |   | X | X |   | X | X | X | X | X | X | X | X |
| Significantly modifying smoke/fire barriers   |   |   | X | X | X | X | X | X | X | X | X | X |   | X | X |   |
| Blocking off and exit stairway  |   |   | X | X | X | X |   |   | X | X | X | X |   | X | X |   |
| Taking a fire alarm system out-of-service   | X | X   |   | X |   | X | X |   | X |   | X |   | X | X | X |   |
| Taking a sprinkler system out-of-service  | X | X   |   | X |   | X | X |   | X |   | X |   | X |   |   | X |
| Disconnecting or disabling alarm devices  | X | X   |   | X |   | X |   |   |   |   |   |   | X | X |   |   |
| Re-Lamping stairwells   |   |   | X | X | X |   |   |   |   |   |   |   |   |   |   |   |



## MARKET & JOHNSON CONSTRUCTION ICRA / INTERUM LIFE SAFETY PLAN

