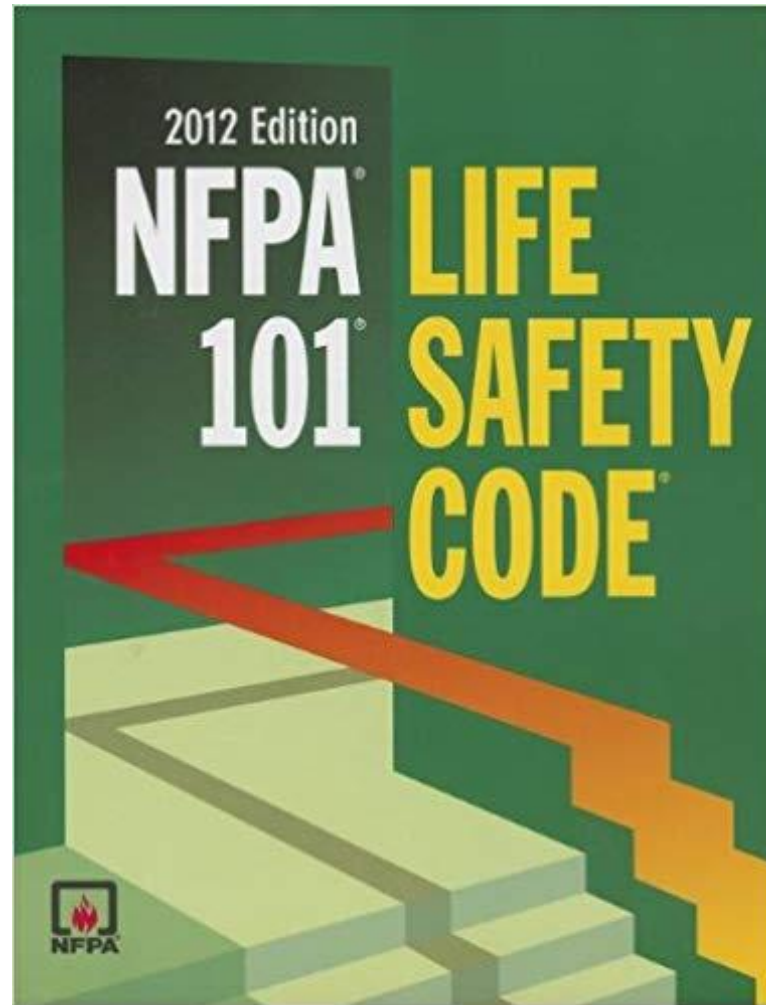


Interim Life Safety Measures



Healthcare Construction Certificate - Level 1

Life Safety Code



18/19.1.1.3.1 All healthcare facilities shall be designed, constructed, maintained, and operated to minimize the possibility of a fire emergency requiring the evacuation of occupants.



Healthcare Construction Certificate - Level 1

Why



Healthcare Construction Certificate - Level 1

Purpose of Interim Life Safety Measures

- **BASIC SAFETY**: During construction or maintenance projects in healthcare occupancies, the basic level of protection for the occupants must be maintained as the patients or residents do not have the ability to self evacuate in the event of a fire.
- **COMPENSATED PROTECTION**: ILSM assures that basic principles of the Life Safety Code though not technically met by the structure are compensated by staff knowledge, training, and alternative systems during a project.



Healthcare Construction Certificate - Level 1

Goal During Construction

Keep People Safe



Healthcare Construction Certificate - Level 1

Goal During Construction

Keep People Safe



Through all phases of work



Healthcare Construction Certificate - Level 1

Goal During Construction

Keep **People** Safe



Patients

Healthcare Staff

Contractors

Public



Healthcare Construction Certificate - Level 1

Goal During Construction

Keep People **Safe**



Physical Harm
Infections/Disease



Healthcare Construction Certificate - Level 1

When to Implement - ILSM

Whenever a defined component of the Life Safety Code is not met as the result of:

Construction Activities

Maintenance Activities

Survey Deficiencies

Unplanned Events



Healthcare Construction Certificate - Level 1

6 STEPS FOR EFFECTIVE ILSM

1. Assessing the situation
2. Developing and reviewing possible interim measures based on the assessment
3. Developing and implementing the measures to be put in place
4. Regular monitoring of the ILSM measures in place
5. Following up on any concerns identified during the monitoring process
6. Reporting trends and concerns to the project lead



Healthcare Construction Certificate - Level 1

People involved in ILSM process

- Safety Department
- Healthcare Project Manager
- Plant Operations personnel
- Architects and Engineers
- Construction Company
- Affected Department Leadership



Healthcare Construction Certificate - Level 1

Elements to Consider

- What hazards will be created within the project area?
 - Ignition sources, fuel load, or impaired devices
 - Airborne dust, contaminants, or noise
- Will a temporary construction barrier help protect patients, staff, and visitors outside the project area?



Healthcare Construction Certificate - Level 1

Elements to Consider

- Does the project compromise the buildings structural or smoke compartment fire features?
 - Smoke barriers
 - Floor slabs
 - Corridor walls
- Will the project impair the sprinkler system?
- Will welding, cutting, and grinding occur?



Healthcare Construction Certificate - Level 1

Elements to Consider

- Will project cause a life safety system disruption?
 - Alarm or suppression system outage
 - Essential electrical or medical gas breach
- Will exiting be affected by the project?
 - Restricted or closure of a required exit path



Healthcare Construction Certificate - Level 1

Elements to Consider

- Will project cause Fire Department or Helicopter access to be disrupted?
- Will noise, odor, or vibration issue happen during construction?
 - Will medical imaging units be affected by construction?



Healthcare Construction Certificate - Level 1

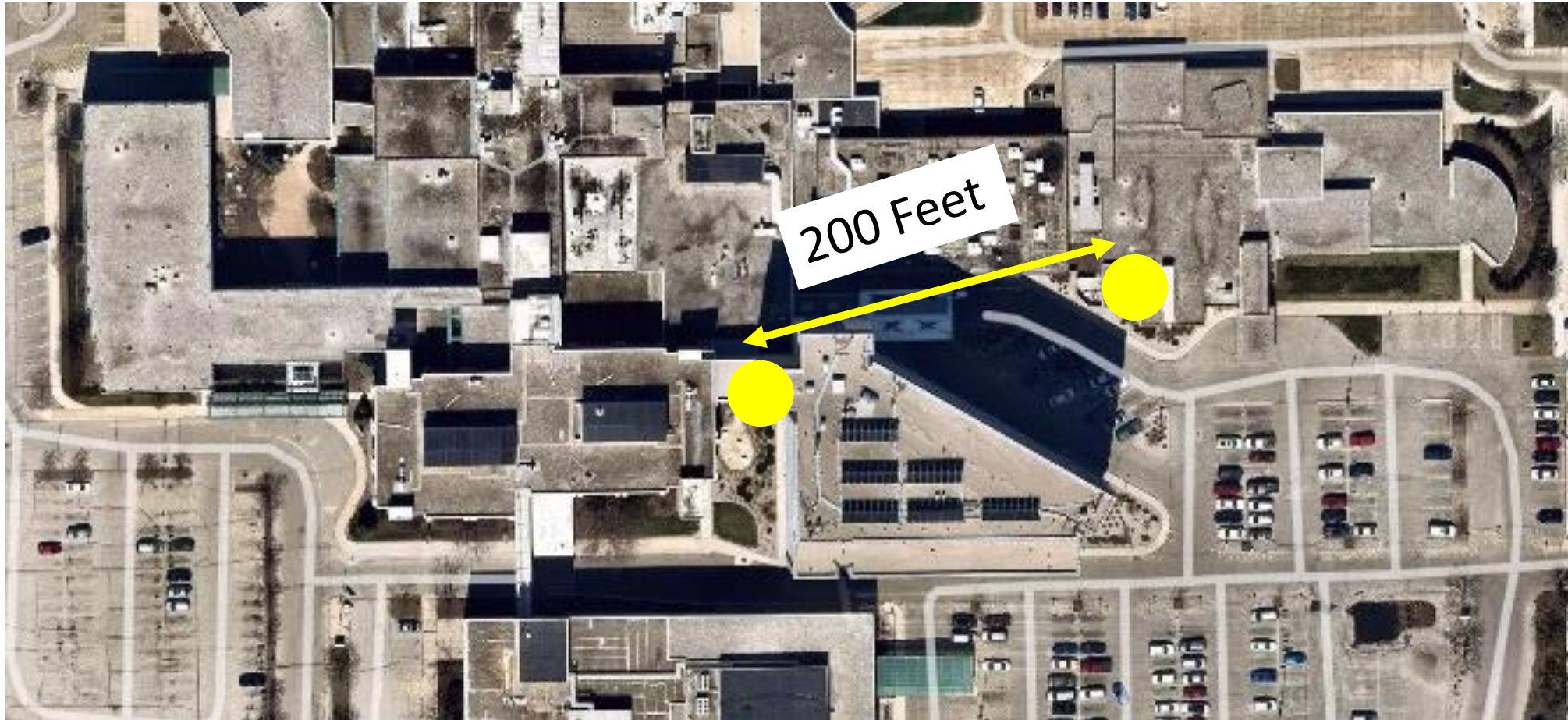
Elements to Consider

- Will construction workers follow facility policies ?
 - Hot work and security
 - Know what you are required to do in case of emergency or what to do in case of a code
- Will project disrupt adjacent areas ?
 - Protect air intakes
 - Clean entrances



Healthcare Construction Certificate - Level 1

Elements to Consider



Healthcare Construction Certificate - Level 1

Elements to Consider

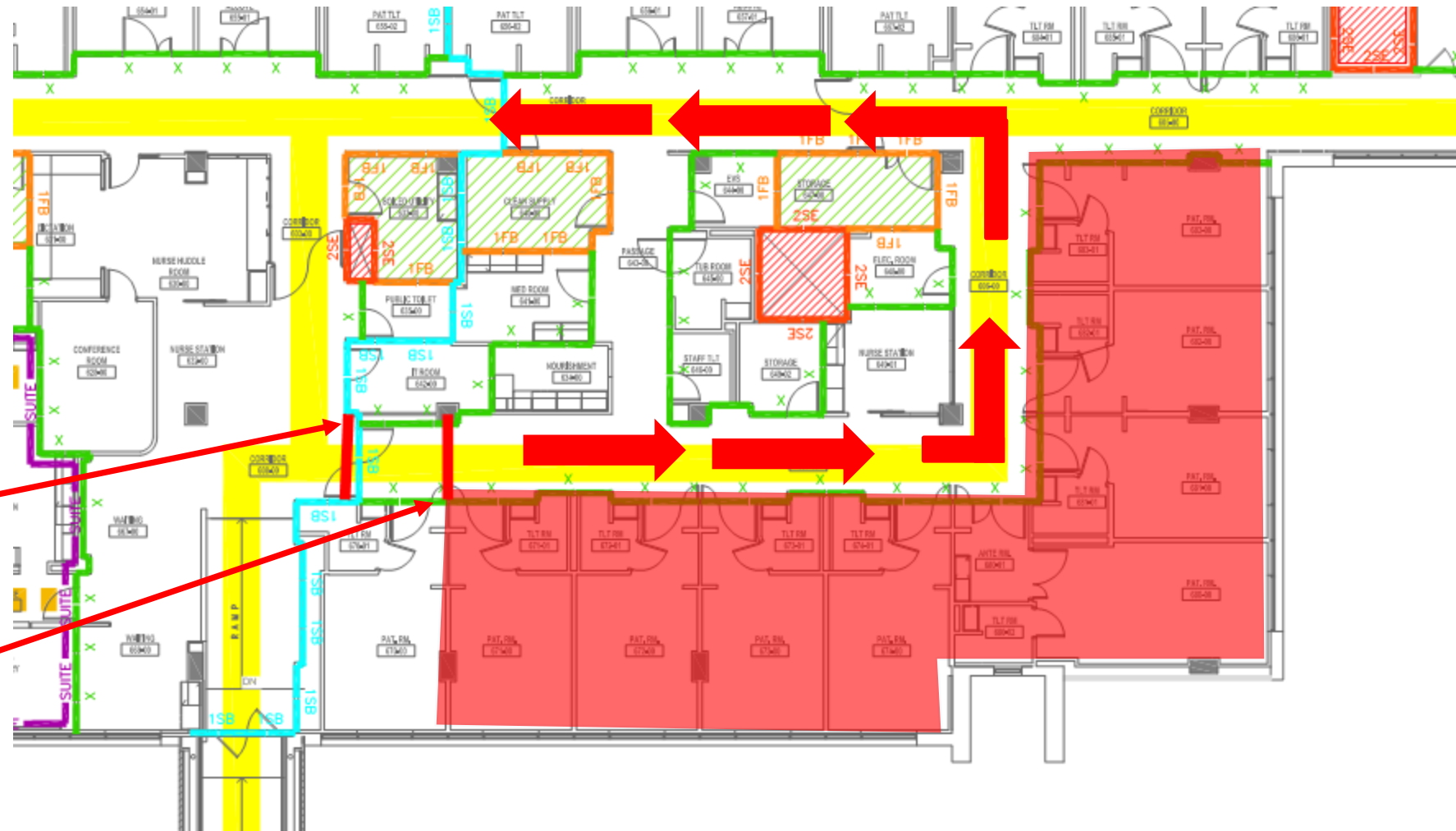
- Will adjacent area staff be informed ?
 - Length and duration of disruption
 - Periodic and reliable communication
 - Scheduled service disruptions
 - Clinical staff input
- Will adjacent area staff be retrained ?
 - Procedural changes



Healthcare Construction Certificate - Level 1

Elements to Consider

Construction
Barrier to work on
bathroom in the
hallway.



Healthcare Construction Certificate - Level 1

Elements to Consider

- Will project involve routine routes ?
 - Outside and inside construction area
 - Maintain communication for updates
- Will issue log track progress?
 - Items are tracked and have accountability
 - Periodic progress reports



Healthcare Construction Certificate - Level 1



This is a detailed architectural floor plan of the 1st floor of a building. The plan shows a complex layout of rooms, corridors, and structural elements. Key features include:

- Rooms and Spaces:** Labeled rooms include 'PRINT SHOP', 'STORAGE', 'RECEPTION', 'OFFICE', 'LABOR', 'ALCOVE', 'JAN', 'EXIT', 'STAIRS', 'ELEVATOR', 'CORRIDOR', 'LOBBY', 'MEETING ROOM', 'TRAINING ROOM', 'RESTROOM', 'KITCHEN', 'DINING ROOM', 'CAFETERIA', 'OFFICE', 'STORAGE', 'RECEPTION', 'OFFICE', 'LABOR', 'ALCOVE', 'JAN', 'EXIT', 'STAIRS', 'ELEVATOR', 'CORRIDOR', 'LOBBY', 'MEETING ROOM', 'TRAINING ROOM', 'RESTROOM', 'KITCHEN', 'DINING ROOM', 'CAFETERIA'.
- Structural Elements:** The plan shows structural columns and walls. Some areas are highlighted in red and orange, possibly indicating specific materials or construction details.
- Orientation:** The plan is oriented with North at the top.
- Dimensions:** Various dimensions are provided for rooms and corridors, such as '100' x 150'', '120' x 100'', '150' x 100'', '180' x 100'', '200' x 100'', '250' x 100'', '300' x 100'', '350' x 100'', '400' x 100'', '450' x 100'', '500' x 100'', '550' x 100'', '600' x 100'', '650' x 100'', '700' x 100'', '750' x 100'', '800' x 100'', '850' x 100'', '900' x 100'', '950' x 100'', '1000' x 100'', '1050' x 100'', '1100' x 100'', '1150' x 100'', '1200' x 100'', '1250' x 100'', '1300' x 100'', '1350' x 100'', '1400' x 100'', '1450' x 100'', '1500' x 100'', '1550' x 100'', '1600' x 100'', '1650' x 100'', '1700' x 100'', '1750' x 100'', '1800' x 100'', '1850' x 100'', '1900' x 100'', '1950' x 100'', '2000' x 100'', '2050' x 100'', '2100' x 100'', '2150' x 100'', '2200' x 100'', '2250' x 100'', '2300' x 100'', '2350' x 100'', '2400' x 100'', '2450' x 100'', '2500' x 100'', '2550' x 100'', '2600' x 100'', '2650' x 100'', '2700' x 100'', '2750' x 100'', '2800' x 100'', '2850' x 100'', '2900' x 100'', '2950' x 100'', '3000' x 100'', '3050' x 100'', '3100' x 100'', '3150' x 100'', '3200' x 100'', '3250' x 100'', '3300' x 100'', '3350' x 100'', '3400' x 100'', '3450' x 100'', '3500' x 100'', '3550' x 100'', '3600' x 100'', '3650' x 100'', '3700' x 100'', '3750' x 100'', '3800' x 100'', '3850' x 100'', '3900' x 100'', '3950' x 100'', '4000' x 100'', '4050' x 100'', '4100' x 100'', '4150' x 100'', '4200' x 100'', '4250' x 100'', '4300' x 100'', '4350' x 100'', '4400' x 100'', '4450' x 100'', '4500' x 100'', '4550' x 100'', '4600' x 100'', '4650' x 100'', '4700' x 100'', '4750' x 100'', '4800' x 100'', '4850' x 100'', '4900' x 100'', '4950' x 100'', '5000' x 100'', '5050' x 100'', '5100' x 100'', '5150' x 100'', '5200' x 100'', '5250' x 100'', '5300' x 100'', '5350' x 100'', '5400' x 100'', '5450' x 100'', '5500' x 100'', '5550' x 100'', '5600' x 100'', '5650' x 100'', '5700' x 100'', '5750' x 100'', '5800' x 100'', '5850' x 100'', '5900' x 100'', '5950' x 100'', '6000' x 100'', '6050' x 100'', '6100' x 100'', '6150' x 100'', '6200' x 100'', '6250' x 100'', '6300' x 100'', '6350' x 100'', '6400' x 100'', '6450' x 100'', '6500' x 100'', '6550' x 100'', '6600' x 100'', '6650' x 100'', '6700' x 100'', '6750' x 100'', '6800' x 100'', '6850' x 100'', '6900' x 100'', '6950' x 100'', '7000' x 100'', '7050' x 100'', '7100' x 100'', '7150' x 100'', '7200' x 100'', '7250' x 100'', '7300' x 100'', '7350' x 100'', '7400' x 100'', '7450' x 100'', '7500' x 100'', '7550' x 100'', '7600' x 100'', '7650' x 100'', '7700' x 100'', '7750' x 100'', '7800' x 100'', '7850' x 100'', '7900' x 100'', '7950' x 100'', '8000' x 100'', '8050' x 100'', '8100' x 100'', '8150' x 100'', '8200' x 100'', '8250' x 100'', '8300' x 100'', '8350' x 100'', '8400' x 100'', '8450' x 100'', '8500' x 100'', '8550' x 100'', '8600' x 100'', '8650' x 100'', '8700' x 100'', '8750' x 100'', '8800' x 100'', '8850' x 100'', '8900' x 100'', '8950' x 100'', '9000' x 100'', '9050' x 100'', '9100' x 100'', '9150' x 100'', '9200' x 100'', '9250' x 100'', '9300' x 100'', '9350' x 100'', '9400' x 100'', '9450' x 100'', '9500' x 100'', '9550' x 100'', '9600' x 100'', '9650' x 100'', '9700' x 100'', '9750' x 100'', '9800' x 100'', '9850' x 100'', '9900' x 100'', '9950' x 100'', '10000' x 100'', '10050' x 100'', '10100' x 100'', '10150' x 100'', '10200' x 100'', '10250' x 100'', '10300' x 100'', '10350' x 100'', '10400' x 100'', '10450' x 100'', '10500' x 100'', '10550' x 100'', '10600' x 100'', '10650' x 100'', '10700' x 100'', '10750' x 100'', '10800' x 100'', '10850' x 100'', '10900' x 100'', '10950' x 100'', '11000' x 100'', '11050' x 100'', '11100' x 100'', '11150' x 100'', '11200' x 100'', '11250' x 100'', '11300' x 100'', '11350' x 100'', '11400' x 100'', '11450' x 100'', '11500' x 100'', '11550' x 100'', '11600' x 100'', '11650' x 100'', '11700' x 100'', '11750' x 100'', '11800' x 100'', '11850' x 100'', '11900' x 100'', '11950' x 100'', '12000' x 100'', '12050' x 100'', '12100' x 100'', '12150' x 100'', '12200' x 100'', '12250' x 100'', '12300' x 100'', '12350' x 100'', '12400' x 100'', '12450' x 100'', '12500' x 100'', '12550' x 100'', '12600' x 100'', '12650' x 100'', '12700' x 100'', '12750' x 100'', '12800' x 100'', '12850' x 100'', '12900' x 100'', '12950' x 100'', '13000' x 100'', '13050' x 100'', '13100' x 100'', '13150' x 100'', '13200' x 100'', '13250' x 100'', '13300' x 100'', '13350' x 100'', '13400' x 100'', '13450' x 100'', '13500' x 100'', '13550' x 100'', '13600' x 100'', '13650' x 100'', '13700' x 100'', '13750' x 100'', '13800' x 100'', '13850' x 100'', '13900' x 100'', '13950' x 100'', '14000' x 100'', '14050' x 100'', '14100' x 100'', '14150' x 100'', '14200' x 100'', '14250' x 100'', '14300' x 100'', '14350' x 100'', '14400' x 100'', '14450' x 100'', '14500' x 100'', '14550' x 100'', '14600' x 100'', '14650' x 100'', '14700' x 100'', '14750' x 100'', '14800' x 100'', '14850' x 100'', '14900' x 100'', '14950' x 100'', '15000' x 100'', '15050' x 100'', '15



Elements to Consider

- Temporary Construction Barriers
 - Healthcare occupants require a higher level of protection than the general public
 - Clinical considerations, duration, and purpose contribute to barrier type
 - Life safety and fire hazard considerations also contribute to barrier type



Healthcare Construction Certificate - Level 1

Elements to Consider

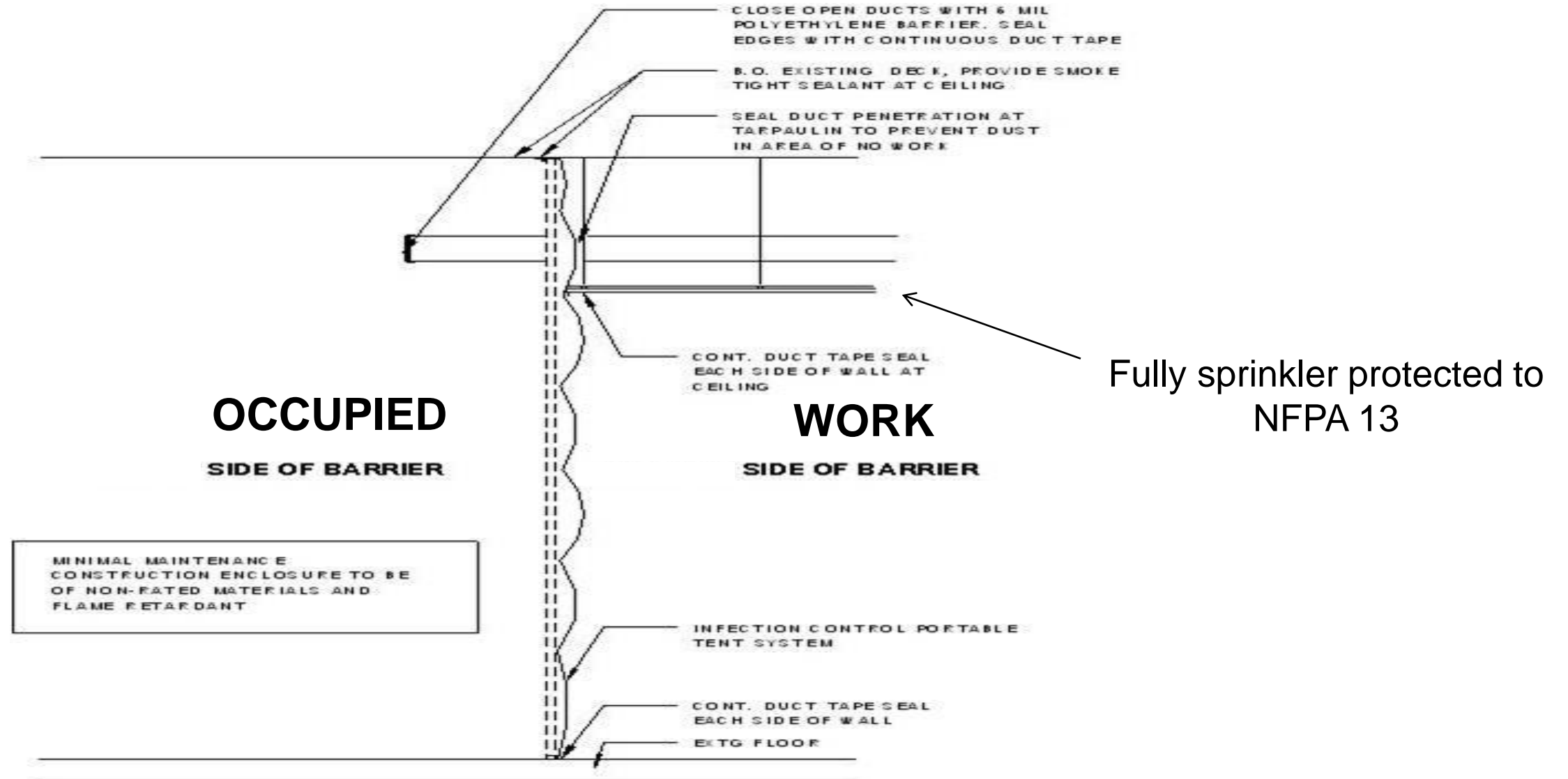
- Temporary Walls
 - Non-combustible material (NC)
 - Fire rated (FR)
 - Smoke Tight (ST)
 - Code official (AHJ)

	Sprinkler	Not Sprinklered
Short Duration	NC ST	NC ST
Medium Duration	NC ST	1 HR FR NC
Long Duration	1 HR FR AHJ	1-2 HR FR NC AHJ



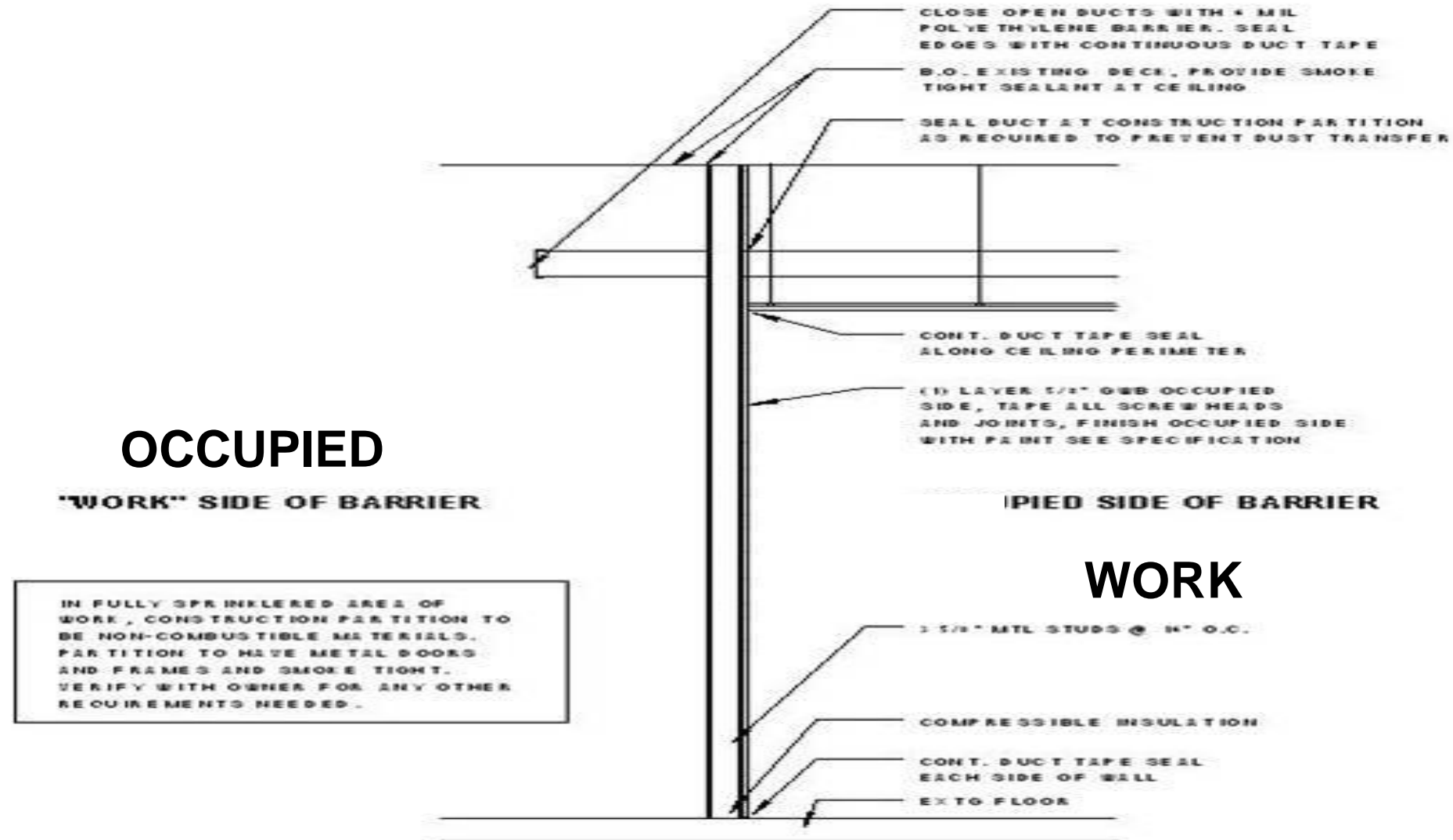
Healthcare Construction Certificate - Level 1

Temporary Plastic Barrier Example



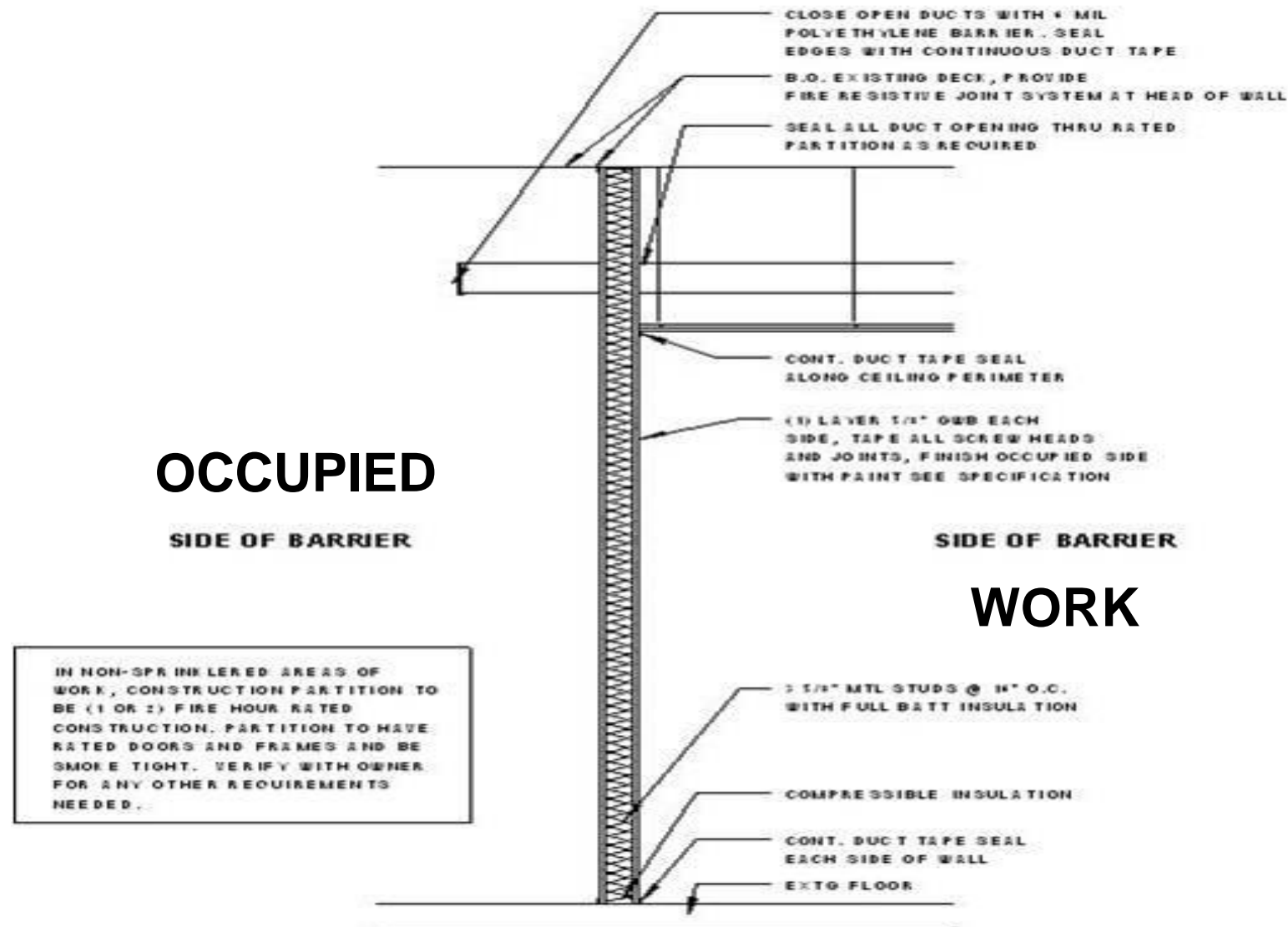
Healthcare Construction Certificate - Level 1

Temporary Hard Barrier Example



Healthcare Construction Certificate - Level 1

Temporary Rated Barrier Example



Healthcare Construction Certificate - Level 1

Plastic Barrier



Healthcare Construction Certificate - Level 1

Hard Plastic Barrier



Healthcare Construction Certificate - Level 1

Hard Plastic Barrier with exhaust port



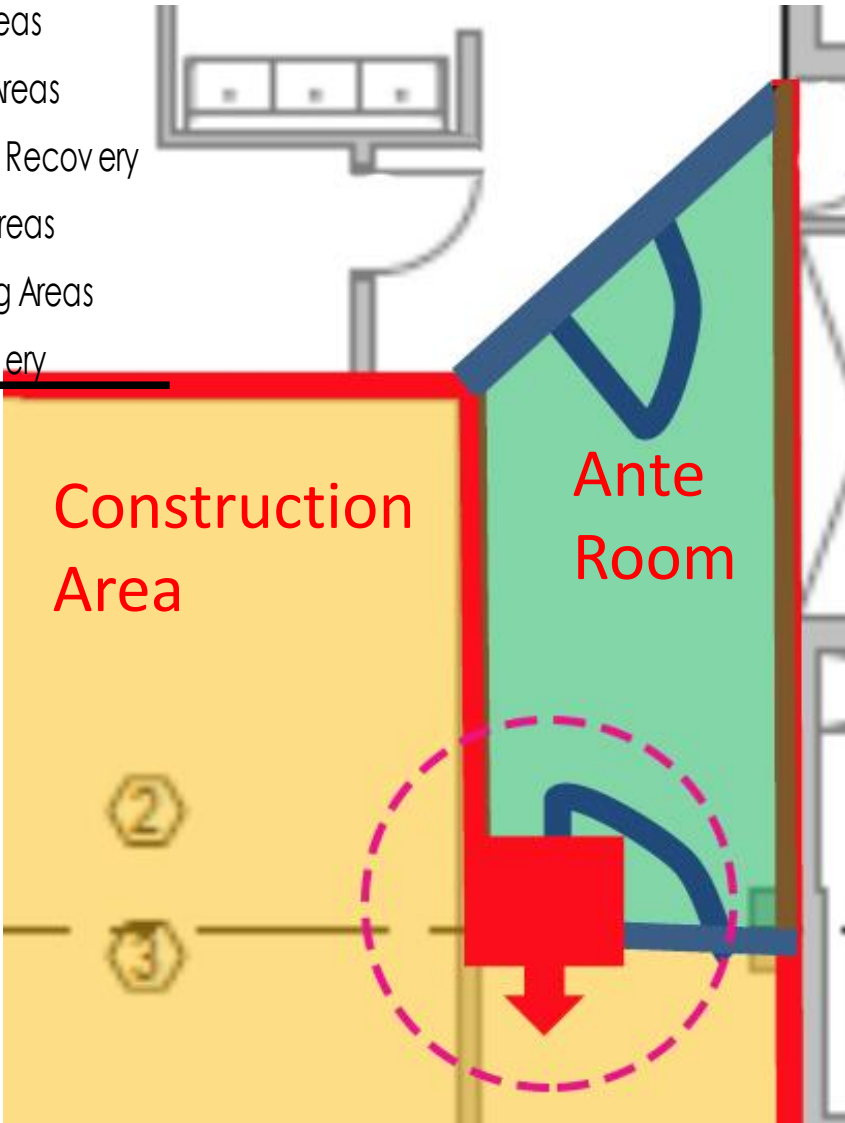
Connect Negative Air machine inside to keep work zone negative and discharge clean air



Healthcare Construction Certificate - Level 1

Ante Room on Construction

Group 3 Medium High	Group 4 Highest
<ul style="list-style-type: none">• Emergency Room• Radiology / MRI• Post Anesthesia Care Units (PACU)• Outpatient Surgery• Nuclear Medicine areas• All ICU's• PT - tank	<ul style="list-style-type: none">• All OR's• Cardiology• Oncology• Anesthesia• Dialysis Units• Transplant Units• Angiography Areas• Cardiac Cath Areas• Cardiovascular Recovery• All Endoscopy Areas• Sterile Processing Areas• Labor and Delivery



Healthcare Construction Certificate - Level 1

Risk Assessment Worksheet

Project Name:	Completed by: Date:
Site:	Location:
Project Start Date:	Project End Date:
Project Overview Details:	

1. Infection Prevention/Control

Determine Risk Group and Activity Type from attached Risk Assessment Matrix:

Risk Group: _____ Activity Type:

Environmental Containment or Barriers required? ☐ Yes ☐ N

(If YES proceed with Minor or Major Infection Control Assessment Process)



Healthcare Construction Certificate - Level 1

Risk Assessment Worksheet

2. Utility Disruptions

Electrical Systems:	<input type="checkbox"/> Yes	<input type="checkbox"/> No
Emergency Power Systems:	<input type="checkbox"/> Yes	<input type="checkbox"/> No
HVAC Systems:	<input type="checkbox"/> Yes	<input type="checkbox"/> No
Medical Gas / Vacuum:	<input type="checkbox"/> Yes	<input type="checkbox"/> No
Waste / Vent:	<input type="checkbox"/> Yes	<input type="checkbox"/> No
Water:	<input type="checkbox"/> Yes	<input type="checkbox"/> No
Pneumatic Tube system:	<input type="checkbox"/> Yes	<input type="checkbox"/> No
Communications / Telephone:	<input type="checkbox"/> Yes	<input type="checkbox"/> No

If Yes to any of the above listed systems, a System Shut-Down Request form must be completed to obtain required approvals and to provide required notification.



Healthcare Construction Certificate - Level 1

Risk Assessment Worksheet

3. Life Safety

Fire Alarm System:	<input type="checkbox"/> Yes	<input type="checkbox"/> No
Sprinkler System:	<input type="checkbox"/> Yes	<input type="checkbox"/> No
Does it involve more than a one-room project:	<input type="checkbox"/> Yes	<input type="checkbox"/> No
Does it infringe on a patient care corridor:	<input type="checkbox"/> Yes	<input type="checkbox"/> No
Emergency egress closed during this project:	<input type="checkbox"/> Yes	<input type="checkbox"/> No
Fire or Smoke Separation Compromised:	<input type="checkbox"/> Yes	<input type="checkbox"/> No

If YES to any of these questions, an Interim Life Safety Measures Determination Form (ILSM must be completed then follow the appropriate procedures as outlined in the Interim Life Safety Plan)

4. Wall / Floor Penetrations

Any penetrations of walls, ceiling, or floor: ☐ Yes ☐ No

If **YES**, Complete a Fire Barrier Permit (FBP)



Healthcare Construction Certificate - Level 1

Risk Assessment Worksheet

5. Vibration & Noise

Is there a potential for areas to be impacted by Noise or Vibration? ☐ Yes ☐ No

If YES, complete an assessment of impact must be documented and mitigation measures implemented

6. Asbestos

Is the project in an area identified as having asbestos containing materials (ACM)? ☐ Yes ☐ No

(Review Survey Documents, if YES workers (Contractors) must be documented as trained for Asbestos Awareness and given a copy of the Asbestos Notice to attach to the form.)



Healthcare Construction Certificate - Level 1

Risk Assessment Worksheet

7. Mold

Is the project in an area identified as having any previous water damage or mold issues? ☐ Yes ☐ No

*(Review Survey Documents, if **YES** follow Mold Abatement Policy – 934*

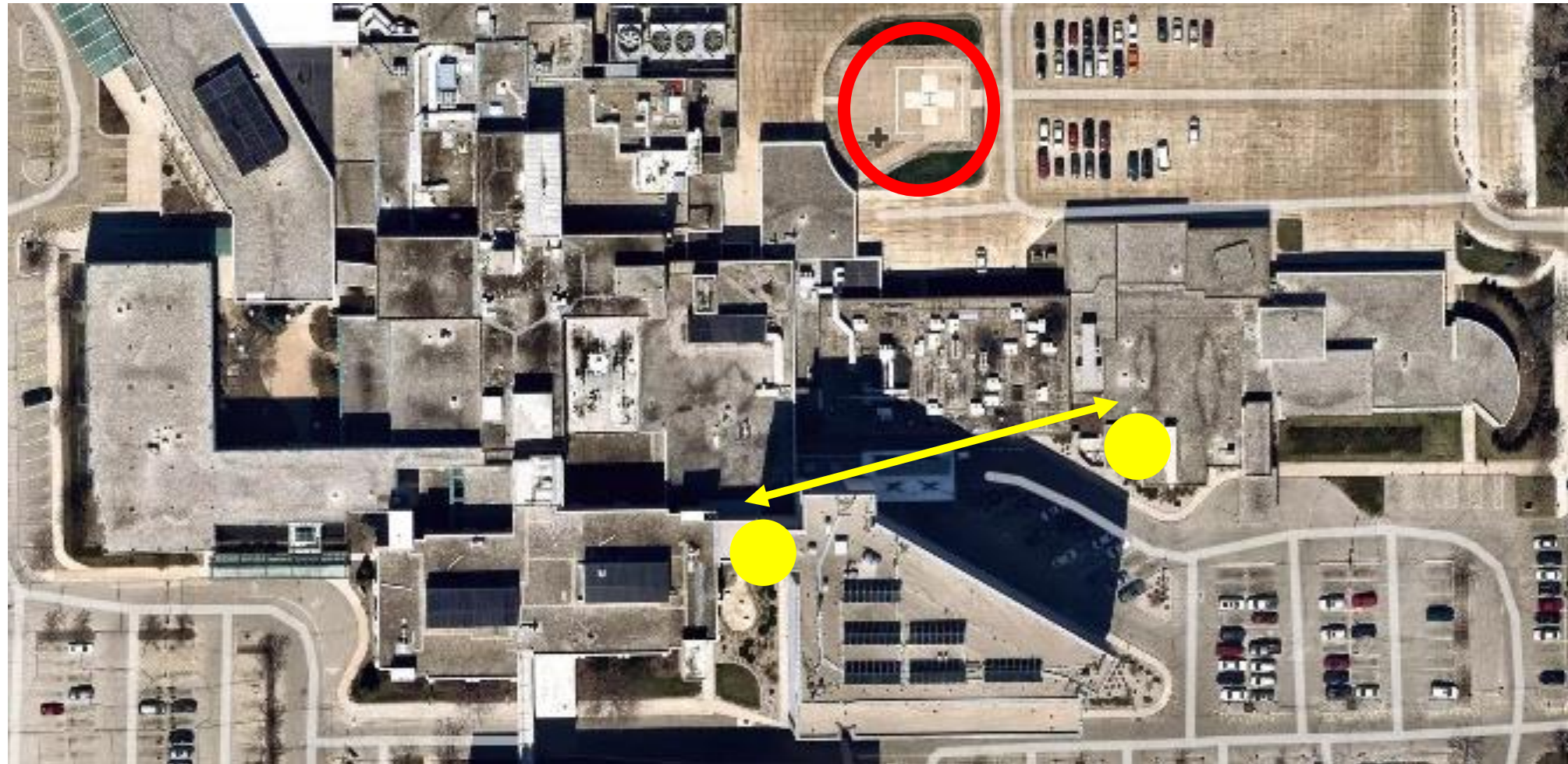
8. Will helicopter landings be affected by the project? Yes No

9. Will Fire Department access be affected by this project? Yes No



Healthcare Construction Certificate - Level 1

Risk Assessment Worksheet



Healthcare Construction Certificate - Level 1

Risk Assessment Worksheet



Healthcare Construction Certificate - Level 1

ILSM Measures

- Facility notifies the fire department and initiates a fire watch
 - when a fire alarm system is out of service for more than four hours in a 24 hour period
 - when a sprinkler system is out of service for more than 10 hours in a 24 hour period
- DQA Memo 17-003 has an approved fire watch policy and documentation resources for Wisconsin licensed facilities
- Check with the local AHJ for additional requirements



Healthcare Construction Certificate - Level 1

ILSM Measures

- Facility post signage identifying the location of alternate exits
- Facility has a written interim life safety measure plan
- Exits in affected areas are inspected on a daily basis
- Equivalent fire alarm and detection systems are used when the primary fire system is temporarily impaired
- Additional firefighting equipment is provided
- Temporary systems are inspected and tested monthly



Healthcare Construction Certificate - Level 1

ILSM Measures

- Temporary construction partitions for fully sprinkler protected construction areas, are smoke tight and made of material that will not contribute to development of fire
- Surveillance of buildings, grounds, and equipment are increased with special attention to construction areas and storage (Includes FD Access)
- Facility enforces storage, housekeeping, and debris removal practices that reduce flammable and combustible fuel load



Healthcare Construction Certificate - Level 1

ILSM Measures

- Facility provides additional training on the use of firefighting equipment to those who work within the affected area
- Facility conducts additional fire drill per shift per quarter within the affected areas
- Facility conducts education to promote awareness of building deficiencies, hazards, and temporary measures
- Facility trains those who work in a Facility to compensate for impaired fire safety features



Healthcare Construction Certificate - Level 1

Code Deficiencies

- Fire exit stairs discharge improperly
- Excessive travel distance to an approved exit
- Nonconforming building construction type
- Improperly protected vertical openings
- Corridor walls do not extend to the structure
- Hazardous areas are not properly protected
- Smoke barrier wall has its doors removed



Healthcare Construction Certificate - Level 1

Construction Related Issues

- Blocking off an approved exit
- Renovation on an occupied floor
- Replacing the fire alarm system (out of service)
- Installing sprinkler system (out of service)
- Significantly modifying smoke or fire barrier walls
- Hot work



Healthcare Construction Certificate - Level 1

Maintenance and Testing

- Taking a fire alarm system out of service
- Taking a sprinkler system out of service
- Disconnecting or disabling alarm devices
- Re-lamping stairwell lighting



Healthcare Construction Certificate - Level 1

ILSM Application Examples



Healthcare Construction Certificate - Level 1

Code Deficiencies Category

Risk Assessment Matrix		Ability notifies the fire department when a fire alarm or sprinkler system is out of service for more than four hours	Ability initiates a fire watch when alarm or sprinkler system is out of service for more than four hours	Ability post signage identifying location of alternate exits	Ability has a written interim life safety measure (LSM) plan	Exits in affected areas are inspected on a daily basis	Temporary but the equivalent fire alarm and detection systems are installed when a fire system is impaired	Additional firefighting equipment provided when needed	PA-241 requires 1 hr fire barrier separations for non-sprinkler protected construction	Protected construction is located in construction zone for extended time frames - 2 hr fire barriers are possible	Severance of buildings, grounds, and equipment are assessed with special attention to construction areas and storage (includes FD Access)	Ability enforces storage, housekeeping, and debris removal practices that reduce flammable and combustible load	Ability provides additional training on the use of firefighting equipment to those who work in affected areas	Ability conducts one additional drill per shift per quarter in affected areas	Temporary systems are inspected and tested monthly	Ability conducts education to those awareness of building deficiencies, hazards, and temporary measures for fire safety	Ability trains those who work in affected fire safety features
Existing significant Life Safety Code Deficiencies or Conditions as a result of Construction or Maintenance																	
Code Deficiencies																	
1	Lacking a code compliant smoke barrier			X	X		X	X	X		X		X	X	X	X	X
2	Fire exit stairs discharge improperly			X	X	X										X	
3	Excessive travel distance to an approved exit			X	X	X					X	X					
4	Lack of two remote exits			X	X						X	X			X		
5	Nonconforming building construction type				X		X	X	X	X	X	X	X	X	X	X	X
6	Improperly properly protected vertical openings				X		X		X	X	X	X		X			
7	Large penetrations and fire barriers				X					X	X			X			
8	Corridor walls do not extend to the structure			X	X		X		X	X	X		X				
9	Hazardous areas not properly protected	X	X		X			X		X	X	X	X				X
Construction Related Issues																	
10	Blocking off an approved exit			X	X	X	X			X	X	X	X	X		X	
11	Renovation on an occupied floor			X	X	X	X	X	X	X	X	X	X	X		X	X
12	Replacing the fire alarm system (out of service)	X	X		X		X			X	X	X	X	X	X	X	
13	Installing sprinkler system (out of service)	X	X		X		X	X		X	X	X	X	X	X	X	X
14	Significantly modifying smoke or fire barrier walls			X	X	X	X	X	X	X	X	X	X			X	X
15	Hot work				X		X	X	X	X	X	X	X			X	X
Maintenance and Testing																	
16	Taking a fire alarm system out of service	X	X		X		X	X		X		X			X	X	X
17	Taking a sprinkler system out of service	X	X		X		X	X		X		X			X		X
18	Disconnecting or disabling alarm devices	X	X		X		X								X	X	
19	Re-Lamping stairwells			X	X	X											
20	Other																



Healthcare Construction Certificate - Level 1

Code Deficiency Example

Large open penetrations within a fire barrier

- Facility has a written ILSM plan
- Surveillance of buildings, grounds, and equipment are increased with special attention to construction areas
- Facility enforces storage and debris removal practices that reduces flammable and combustible fuel load
- Facility conducts one additional fire drill per shift per quarter within the affected area



Healthcare Construction Certificate - Level 1

Construction Category

Risk Assessment Matrix		Existing significant Life Safety Code Deficiencies or Conditions as a result of Construction or Maintenance																Facility notifies the fire department when a fire alarm or sprinkler system is out of service for more than four hours	Facility initiates a fire watch when a fire alarm or sprinkler system is out of service for more than four hours	Facility posts signage identifying the location of alternate exits	Facility has a written interim life safety measure (ILSM) plan	Exits in affected areas are inspected on a daily basis	Temporary but the equivalent fire alarm and detection systems are used when a fire system is impaired	Additional firefighting equipment is provided when needed	NFPA 241 requires 1 hr fire barrier separations for non-sprinkler protected construction zones. If combustible storage is located in construction zone for extended time frames - 2 hr fire barriers are possible.	Surveillance of buildings, grounds, and equipment are increased with special attention to construction areas and storage (includes FD Access)	Facility enforces storage, housekeeping, and debris removal practices that reduce the flammable and combustible fire load	Facility provides additional training on the use of firefighting equipment to those who work in the Facility as needed	Facility conducts one additional fire drill per shift per quarter in the affected areas	Temporary systems are inspected and tested monthly	Facility conducts education to promote awareness of building deficiencies, hazards, and safety	Facility trains those who work in a Facility to compensate for impaired fire safety features	Per TJC LS.01.02.01																																																																																																																																																																																																																																																																																																																																																																																																																																																																																																																																																																																																																																																																																																																																																																																																																																																																																																																																																																																																																																																																																																																																								
Code Deficiencies																																																																																																																																																																																																																																																																																																																																																																																																																																																																																																																																																																																																																																																																																																																																																																																																																																																																																																																																																																																																																																																																																																																																																																									
1	Lacking a code compliant smoke barrier				X	X		X	X	X			X	X	X	X																																																																																																																																																																																																																																																																																																																																																																																																																																																																																																																																																																																																																																																																																																																																																																																																																																																																																																																																																																																																																																																																																																																																																									



Healthcare Construction Certificate - Level 1

Construction Example

Blocking off an approved exit

- Facility has a written ILSM plan and submits to DHS plan review
- Facility post signage identifying the location of alternate exits
- Exits in affected areas are inspected on a daily basis
- Equivalent fire alarm and detection systems are used
- Increased surveillance of buildings, grounds, and equipment
- Facility conducts one additional fire drill per shift per quarter within the affected area



Healthcare Construction Certificate - Level 1

Construction Example

Blocking off an approved exit (continued)

- Facility enforces storage and debris removal practices that reduces flammable and combustible fuel load
- Facility provides additional training on the use of firefighting equipment to those who work within the affected area
- Facility conducts education to promote awareness of the hazards and temporary measures for fire safety



Healthcare Construction Certificate - Level 1

Maintenance Category

Risk Assessment Matrix		Existing significant Life Safety Code Deficiencies or Conditions as a result of Construction or Maintenance														
		Facility notifies the fire department when a fire alarm or sprinkler system is out of service for more than four hours	Facility initiates a fire watch when a fire alarm or sprinkler system is out of service for more than four hours	Facility posts signage identifying the location of alternate exits	Facility has a written interim life safety measure (ILSM) plan	Exits in affected areas are inspected on a daily basis	Temporary but the equivalent fire alarm and detection systems are used when a fire system is impaired	Additional firefighting equipment is provided when needed	NFPA 2-41 requires 1 hr fire barrier separations for non-sprinkler protected construction zones. If combustible storage is located in construction zone for extended time frames - 2 hr fire barriers are possible.	Surveillance of buildings, grounds, and equipment are increased with special attention to construction areas and storage (includes FD Access)	Facility enforces storage, housekeeping, and debris removal practices that reduce the flammable and combustible fire load	Facility provides additional training on the use of firefighting equipment to those who work in the facility as needed	Facility conducts one additional fire drill per shift per quarter in the affected areas	Temporary systems are inspected and tested monthly	Facility conducts education to promote awareness of building deficiencies, hazards, and safety	Facility trains those who work in a facility to compensate for impaired fire safety features
Code Deficiencies																
1	Lacking a code compliant smoke barrier			X	X		X	X	X		X	X	X	X	X	X
2	Fire exit stairs discharge improperly			X	X	X									X	
3	Excessive travel distance to an approved exit			X	X	X				X	X					
4	Lack of two remote exits			X	X					X	X			X		
5	Nonconforming building construction type				X		X	X	X	X	X	X	X	X	X	X
6	Improperly properly protected vertical openings				X		X		X	X	X		X			
7	Large penetrations and fire barriers				X				X	X	X	X	X			
8	Corridor walls do not extend to the structure			X	X		X		X	X	X		X			
9	Hazardous areas not properly protected	X	X		X			X		X	X	X				X
Construction Related Issues																
10	Blocking off an approved exit			X	X	X	X			X	X	X	X		X	
11	Renovation on an occupied floor			X	X	X	X	X	X	X	X	X	X		X	X
12	Replacing the fire alarm system (out of service)	X	X		X		X			X	X	X	X	X	X	
13	Installing sprinkler system (out of service)	X	X		X		X	X		X	X	X	X	X	X	X
14	Significantly modifying smoke or fire barrier walls			X	X	X	X	X	X	X	X	X	X		X	X
Maintenance and Testing																
16	Taking a fire alarm system out of service	X	X		X		X	X		X		X		X	X	X
17	Taking a sprinkler system out of service	X	X		X		X	X		X		X		X		X
18	Disconnecting or disabling alarm devices	X	X		X		X							X	X	
19	Re-Lamping stairwells			X	X	X										
20	Other															



Healthcare Construction Certificate - Level 1

Per TJC LS.01.02.01

Maintenance Example

Fire alarm system out of service for 5 hours

- Facility has a written ILSM plan
- Facility notifies the fire department
- Facility implements a fire watch
- Equivalent fire alarm and detection systems are used
- Additional fire fighting equipment is provided
- Increased surveillance of buildings, grounds, and equipment



Healthcare Construction Certificate - Level 1

Maintenance Example

Fire alarm system out of service for 5 hours (continued)

- Facility provides additional training on the use of firefighting equipment to those who work within the affected area
- Temporary systems are inspected and tested monthly
- Facility conducts education to promote awareness of the hazards and temporary measures for fire safety
- Facility trains staff how to compensate for impaired fire safety features



Healthcare Construction Certificate - Level 1

ILSM Assessment Tool

			INTERIM MEASURES						
Evaluation Process:									
Place an "X" in the appropriate column for each question listed below. If the "cell" is red an ILSM is required.					Post signs identifying alternative exits	Provide temp/ equivalent fire alarm & detection systems	Provide addtl fire fighting equipment	Use temporary construction partitions	Enforce storage, housekeeping & debris removal practices
			Yes	No	REF: LS.01.02.01 EP3	REF: LS.01.02.01 EP5	REF: LS.01.02.01 EP6	REF: LS01.02.01 EP7	REF: LS.01.02.01 EP9
1) Does project significantly breach, alter or compromise the integrity of any exit ? (This includes exit routes, exit accesses & exit discharge features.)									
2) Does project significantly compromise the building's structural or compartmental fire features, such as smoke barriers, floor slabs & corridor walls ?									
3) Does this project significantly impair the buildings fire alarm system or render it out of service for 4 hr or more in a 24hr period?									
4) Does this project significantly impair the building's fire suppression system for 10hr or more in a 24 hr period? (Hotwork will be limited or prohibited in areas where fire suppression is									
5) Does project involve "hotwork", such as cutting, welding and/or soldering ?									
6) Does project involve the presence of large quantities of combustibles and/or debris ?									
7) Will emergency power systems be impaired ?									
8) Will medical gas system be impaired ?									
9) Will Fire Department or Helicopter acces be obstructed?									
10) Will odor, noise, or vibration issues be present ?									

[illegible][illegible]

Healthcare Construction Certificate - Level 1

EP-3 LS.01.02.01	Post signage identifying the location of alternative exits to everyone affected <input type="checkbox"/> Installing temporary illuminated exit signs <input type="checkbox"/> Post temporary laminated signs near illuminated source on E-power <input type="checkbox"/> Remove or cover exit signs that are no longer applicable DOCUMENTATION OPTIONS: <input type="checkbox"/> Use work order system to verify instructions <input type="checkbox"/> Take pictures of installed temporary signs <input type="checkbox"/> Produce a floor plan identifying sign locations of re-routed exits (must be signed & dated)	EP-2 LS.01.02.01	Initiate fire watch; notify the fire department (or other emergency response group) and initiate a fire watch when a fire alarm or sprinkler system is out of service more than 4 hours in a 24-hour period in an occupied building <input type="checkbox"/> Call fire department to notify them of the deficiency <input type="checkbox"/> Notify FM Global & initiate "red tag permit" <input type="checkbox"/> Notify Security Team Leader that fire watch is needed DOCUMENTATION OPTIONS: <input type="checkbox"/> Use work order system to verify instructions <input type="checkbox"/> Copy of fax, "red tape permit", or email <input type="checkbox"/> Record dates of notification on "project overview" for FM Global and Fire Department	EP-2 LS.01.02.01	Conduct a fire watch when a fire alarm or sprinkler system is out of service more than 4 hours in a 24-hour period in an occupied building <input checked="" type="checkbox"/> Conduct fire watch DOCUMENTATION OPTIONS: <input type="checkbox"/> Forward fire watch form to Plant Operations Team Leader daily
	Provide temporary but equivalent fire alarm and detection systems for use when a fire system is impaired <input type="checkbox"/> Install battery operated heat or smoke detectors <input type="checkbox"/> Install a temporary horn / strobe and connect to the fire alarm system <input type="checkbox"/> Implement a fire watch DOCUMENTATION OPTIONS: <input type="checkbox"/> Use work order system to verify instructions <input type="checkbox"/> Produce floor plan identifying device locations (must be signed & dated) <input type="checkbox"/> Complete fire watch form <input type="checkbox"/> Take pictures		Inspect and test temporary systems monthly; the completion date of the test is documented <input checked="" type="checkbox"/> Initiate and complete monthly work order for temporary fire fighting equipment <input checked="" type="checkbox"/> Inspect storage, housekeeping & debris removal practices <input checked="" type="checkbox"/> Inspect temporary construction partitions <input checked="" type="checkbox"/> Inspect temporary heat or smoke detectors <input checked="" type="checkbox"/> Inspect temporary horns & strobes <input checked="" type="checkbox"/> Inspect temporary E-Power back up systems, equipment, & inspect temporary medical gases DOCUMENTATION OPTIONS: <input checked="" type="checkbox"/> Use work order system to verify instructions Copy of completed inspection work order Daily inspection checklist	EP-4 LS.01.02.01	Inspect exits in affected areas on a daily basis <input type="checkbox"/> Conduct inspection utilizing daily inspection checklist DOCUMENTATION OPTIONS: <input type="checkbox"/> Inspection checklist <input type="checkbox"/> Take pictures
EP-5 LS.01.02.01	Provide temporary but equivalent fire alarm and detection systems for use when a fire system is impaired <input type="checkbox"/> Install battery operated heat or smoke detectors <input type="checkbox"/> Install a temporary horn / strobe and connect to the fire alarm system <input type="checkbox"/> Implement a fire watch DOCUMENTATION OPTIONS: <input type="checkbox"/> Use work order system to verify instructions <input type="checkbox"/> Produce floor plan identifying device locations (must be signed & dated) <input type="checkbox"/> Complete fire watch form <input type="checkbox"/> Take pictures	EP-12 LS.01.02.01	Inspect and test temporary systems monthly; the completion date of the test is documented <input checked="" type="checkbox"/> Initiate and complete monthly work order for temporary fire fighting equipment <input checked="" type="checkbox"/> Inspect storage, housekeeping & debris removal practices <input checked="" type="checkbox"/> Inspect temporary construction partitions <input checked="" type="checkbox"/> Inspect temporary heat or smoke detectors <input checked="" type="checkbox"/> Inspect temporary horns & strobes <input checked="" type="checkbox"/> Inspect temporary E-Power back up systems, equipment, & inspect temporary medical gases DOCUMENTATION OPTIONS: <input checked="" type="checkbox"/> Use work order system to verify instructions Copy of completed inspection work order Daily inspection checklist	EP-8 LS.01.02.01	Increase surveillance of buildings, grounds, & equipment, giving special attention to construction areas & storage, excavation, & field offices <input type="checkbox"/> Conduct inspection utilizing daily inspection checklist DOCUMENTATION OPTIONS: <input type="checkbox"/> Provide ILSM inspection checklist <input type="checkbox"/> Take pictures
EP-6 LS.01.02.01	Provide additional firefighting equipment <input type="checkbox"/> Place fire extinguishers in work zone(s); ensure inspection date is compliant DOCUMENTATION OPTIONS: <input type="checkbox"/> Use work order system to verify instructions <input type="checkbox"/> Produce floor plan identifying fire extinguisher locations (must be signed & dated) <input type="checkbox"/> Take pictures	EP's 9-10 EC.02.05.07	Implement measures to protect patients, visitors, & staff until necessary repairs or corrections are completed; if a required emergency power system test fails, the organization performs a retest after making the necessary repairs or corrections <input type="checkbox"/> Provide extension cords as needed <input type="checkbox"/> Connect temporary generator <input type="checkbox"/> Provide battery powered medical equipment as needed <input type="checkbox"/> Re-test emergency power system after making all repairs & prior to disconnect of temporary system <input type="checkbox"/> Conduct weekly inspection and monthly test of temporary system DOCUMENTATION OPTIONS: <input type="checkbox"/> Use work order system to verify instructions <input type="checkbox"/> Repair work order <input type="checkbox"/> Vendor report describing repairs <input type="checkbox"/> Generator log	EP-10 LS.01.02.01	Provide additional training to those who work in the organization on the use of firefighting equipment <input type="checkbox"/> Provide in-service education to staff and/or contractor on use of temporary fire extinguishers DOCUMENT METHOD: <input type="checkbox"/> Use work order system to verify instructions <input type="checkbox"/> Signed attendance roster for training
EP-7 LS.01.02.01	Use temporary construction partitions that are smoke-tight, or made of non-combustible or limited-combustible material that will not contribute to the development or spread of fire <input type="checkbox"/> Utilize a hepa cart <input type="checkbox"/> If work is less than a designated 8 hour shift, or under constant supervision by contractor, & noise / visual barrier is not a concern, may use a zip wall fire-rated plastic barrier, sealed at the floor, ceiling & wall (work area cannot be left unsupervised) <input type="checkbox"/> If project has dust, flammability, noise, visual, or will be unsupervised, a hard wall partition per specification must be used (see attached detail) DOCUMENTATION OPTIONS: <input type="checkbox"/> Use work order system to verify instructions <input type="checkbox"/> Produce a floor plan (must be signed & dated) <input type="checkbox"/> Take pictures		Test piped medical gas and vacuum systems for purity, correct gas, & proper pressure when these systems are installed, modified or repaired <input type="checkbox"/> Provide temporary med gas tanks <input type="checkbox"/> Provide temporary med gas pumps DOCUMENTATION OPTIONS: <input type="checkbox"/> Use work order system to verify instructions <input type="checkbox"/> Provide vendor report, work order, and/or detailed invoice <input type="checkbox"/> Provide certification test report to include date, purity, correct gas levels & proper pressure	EP-11 LS.01.02.01	Conduct one (1) additional fire drill per shift / per quarter <input type="checkbox"/> Conduct fire drill in project area <input type="checkbox"/> Document drill on fire drill critique form and route to Plant Operations Team Leader DOCUMENTATION OPTIONS: <input type="checkbox"/> Fire drill critique form
EP-9 LS.01.02.01	Enforce storage, housekeeping, and debris removal practices that reduce the building's flammable and combustible fire load to the lowest feasible level. <input type="checkbox"/> No storage or debris in any corridor outside construction partition <input type="checkbox"/> Debris removed & disposed of at end of each shift; daily <input type="checkbox"/> Contractor to maintain a safe, clean & orderly site DOCUMENTATION OPTIONS: <input type="checkbox"/> Use work order system to verify instructions <input type="checkbox"/> Daily verification on checklist <input type="checkbox"/> Take pictures	EP-2 EC.02.05.09	Test piped medical gas and vacuum systems for purity, correct gas, & proper pressure when these systems are installed, modified or repaired <input type="checkbox"/> Provide temporary med gas tanks <input type="checkbox"/> Provide temporary med gas pumps DOCUMENTATION OPTIONS: <input type="checkbox"/> Use work order system to verify instructions <input type="checkbox"/> Provide vendor report, work order, and/or detailed invoice <input type="checkbox"/> Provide certification test report to include date, purity, correct gas levels & proper pressure	EP-13 LS.01.02.01	Conduct education to promote awareness of building deficiencies, construction hazards, & temporary measures implemented to maintain fire safety <input type="checkbox"/> Discuss building deficiencies with affected department leadership <input type="checkbox"/> Develop compliance / training plan with department leadership <input type="checkbox"/> Department leadership communicates training plan to staff <input type="checkbox"/> Department leadership forward plan and attendance roster to Plant Operations Team Leader DOCUMENTATION OPTIONS: <input type="checkbox"/> Use work order system to verify instructions <input type="checkbox"/> Attendance roster <input type="checkbox"/> Email plan to affected department(s) and staff <input type="checkbox"/> Indicate impairment of revision on floor plan <input type="checkbox"/> Power point slide
				EP-14 LS.01.02.01	Train those who work in the organization to compensate for impaired structural or compartmental fire safety features <input type="checkbox"/> Discuss building deficiencies with affected department leadership <input type="checkbox"/> Develop compliance / training plan with department leadership <input type="checkbox"/> Department leadership communicates training plan to staff <input type="checkbox"/> Department leadership forward plan and attendance roster to Plant Operations Team Leader DOCUMENTATION OPTIONS: <input type="checkbox"/> Use work order system to verify instructions <input type="checkbox"/> Attendance roster <input type="checkbox"/> Email plan to affected department(s) and staff <input type="checkbox"/> Indicate impairment of revision on floor plan <input type="checkbox"/> Power point slide



Healthcare Construction Certificate - Level 1

Daily Barrier Inspection

Construction Site:

The following items are reviewed daily by facility staff. If variances are found, they should be noted on page 2 and what follow up action taken.

Infection Control

- 1. Plastic is tight and free from breaks
- 2. Walls and unused doors are properly sealed
- 3. No evidence of dust or foot prints on the floor
- 4. Floor mats are used and are reasonably clean
- 5. Ventilation ducts and vents are sealed
- 6. Negative pressure maintained in area; (readings or tissue test)

General Safety

- 1. Contractor has completed the daily check form and it is posted
- 2. Employee law and OSHA poster posted
- 3. Emergency number posted
- 4. Access to area is secured or barricaded
- 5. Containers (chemicals, etc.) properly labeled and secured
- 6. Appropriate PPE used: for example; eye protection, face shields, respir masks, hard hats, hearing protection
- 7. Gas cylinders upright and tied, flow gages and regulators maintained removed if not in use, cylinder caps in place as required

Waste Management

- 1. Regular disposal of waste material and trash
- 2. Materials properly stored or stacked
- 3. Passageways cleaned and maintained
- 4. Spills properly cleaned up
- 5. Construction waste covered when transported in the facility
- 6. Cart wheels cleaned before leaving construction area

Initial and date of daily check:

To be completed daily by Director of Plant Operations or Delegate

Month:								
Date	Initials	Pass/Fail	Date	Initials	Pass/Fail	Date	Initials	Pass/Fail
1			11			21		
2			12			22		
3			13			23		
4			14			24		
5			15			25		
6			16			26		
7			17			27		
8			18			28		
9			19			29		
10			20			30		
						31		



Healthcare Construction Certificate - Level 1

Daily / Weekly Assessment Sheet

DIAL (1234) to report all emergencies requiring immediate assistance

Project Name:

Week:

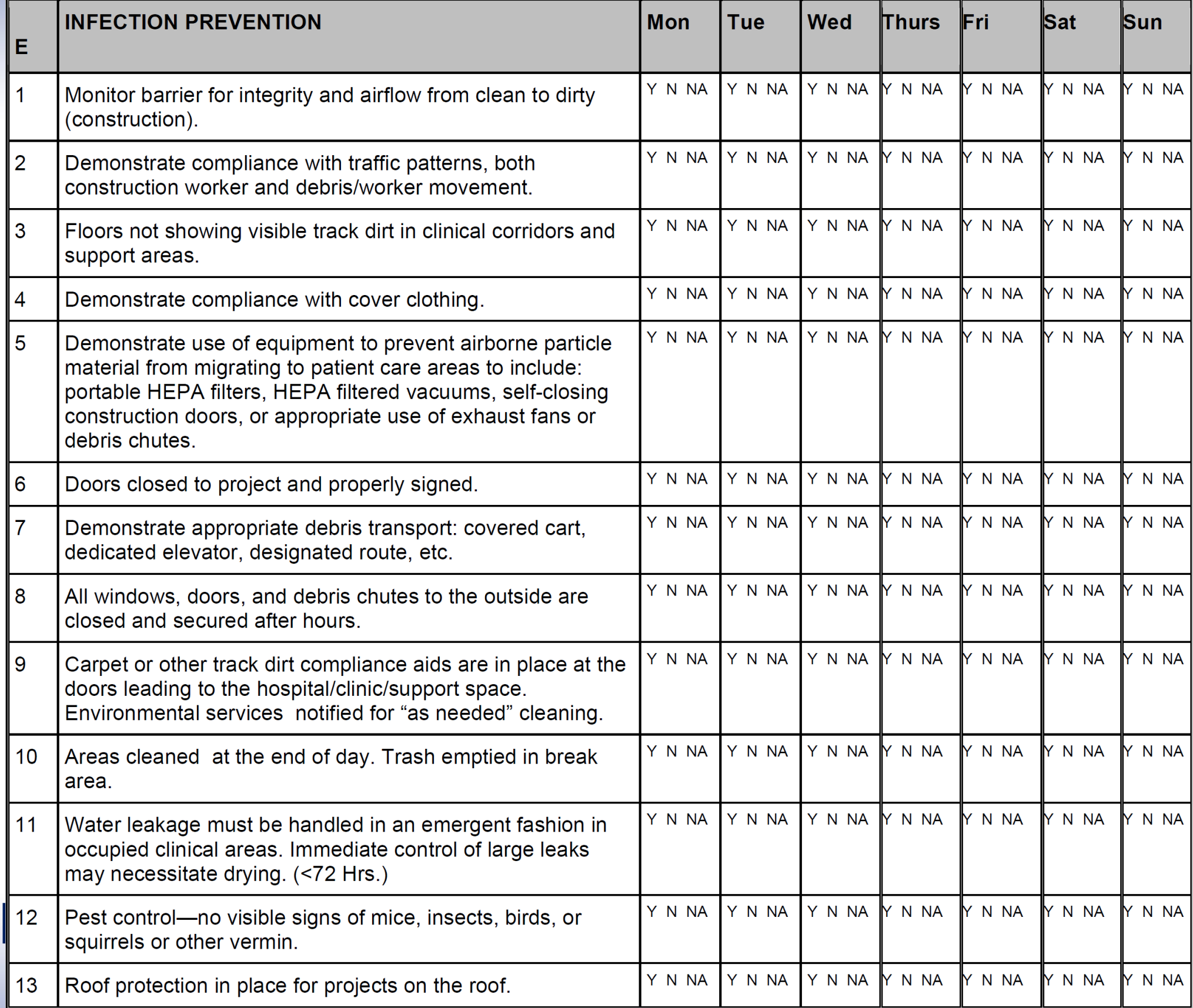
A	EXITS	Mon	Tue	Wed	Thurs	Fri	Sat	Sat
1	Are all exit paths free from debris and proper clear width?	Y N NA	Y N NA	Y N NA	Y N NA	Y N NA	Y N NA	Y N NA
2	Is all temporary signage identifying alternate exists visible?	Y N NA	Y N NA	Y N NA	Y N NA	Y N NA	Y N NA	Y N NA
B	FIRE EQUIPMENT & Safety	Mon	Tue	Wed	Thurs	Fri	Sat	Sat
1	Are temporary fire detections systems functioning	Y N NA	Y N NA	Y N NA	Y N NA	Y N NA	Y N NA	Y N NA
2	Is additional firefighting equipment obstructed?	Y N NA	Y N NA	Y N NA	Y N NA	Y N NA	Y N NA	Y N NA
3	Cutting and welding operations properly conducted.	Y N NA	Y N NA	Y N NA	Y N NA	Y N NA	Y N NA	Y N NA
3	New employees instructed in all policies and safety regulations and requirements. No smoking policy strictly enforced.	Y N NA	Y N NA	Y N NA	Y N NA	Y N NA	Y N NA	Y N NA
4	Interim life safety measures in place and training conducted.	Y N NA	Y N NA	Y N NA	Y N NA	Y N NA	Y N NA	Y N NA
5	Has the temp smoke detection been turned on	Y N NA	Y N NA	Y N NA	Y N NA	Y N NA	Y N NA	Y N NA



Healthcare Construction Certificate - Level 1

D		Mon	Tue	Wed	Thurs	Fri	Sat	Sat
	GENERAL SAFETY							
1	Hand and safety rails in place and in good condition.	Y N NA	Y N NA	Y N NA	Y N NA	Y N NA	Y N NA	Y N NA
2	All areas clean and free of debris. Excess scrap material removed from site.	Y N NA	Y N NA	Y N NA	Y N NA	Y N NA	Y N NA	Y N NA
3	Power properly secured at the end of each workday.	Y N NA	Y N NA	Y N NA	Y N NA	Y N NA	Y N NA	Y N NA
4	New employees instructed in Right-To-Know regulations.	Y N NA	Y N NA	Y N NA	Y N NA	Y N NA	Y N NA	Y N NA
5	Proper documentation available for all required agencies (OSHA 200, MSDS, etc.)	Y N NA	Y N NA	Y N NA	Y N NA	Y N NA	Y N NA	Y N NA
6	All scaffolding complies with OSHA requirements	Y N NA	Y N NA	Y N NA	Y N NA	Y N NA	Y N NA	Y N NA
7	All temporary construction partitions in place and negative air reading acceptable?	Y N NA	Y N NA	Y N NA	Y N NA	Y N NA	Y N NA	Y N NA
8	Housekeeping, storage and flammable storage meet guidelines?	Y N NA	Y N NA	Y N NA	Y N NA	Y N NA	Y N NA	Y N NA
9	Was any training done for hospital employees and all information documented?	Y N NA	Y N NA	Y N NA	Y N NA	Y N NA	Y N NA	Y N NA
10	Walkthrough of areas surrounding construction zone completed.	Y N NA	Y N NA	Y N NA	Y N NA	Y N NA	Y N NA	Y N NA
11	Does everyone in the construction areas seem to be following safety guidelines?	Y N NA	Y N NA	Y N NA	Y N NA	Y N NA	Y N NA	Y N NA







Contractor Daily Check

Topic	N/A	Pass	Fail	Topic	N/A	Pass	Fail
Infection Control				Material Storage and Disposal			
Dust not leaking from area, plastic is tight and free from breaks				Regular disposal of waste material and trash			
Walls and unused doors are properly sealed				Materials properly stored or stacked			
Floor mats are used and are reasonably clean				Passageways clear and maintained			
Ventilation ducts and vents are sealed				Spills properly cleaned-up			
Negative pressure maintained in area; Readings: _____ or tissue check _____				Construction waste covered when transported in hospital			
If particle counting, within normal range:				Cart wheels cleaned before leaving construction area			
Filter on negative pressure machine and on, vents in place and in good condition							
General Safety				Fire Safety			
Employee law and OSHA poster posted; emergency number posted				Welding: Hot work permits			
Work area properly signed; fire routes, "exit" - "no exit"				Adequate fire extinguishers and inspected			
Access to area is secured or barricaded				Fire Watch conducted if needed			
Containers (chemicals etc.) properly labeled and secured				Gas cylinders upright and tied, flow gages and regulators maintained; removed when not in use, cylinder caps in place as required			
Electrical Safety				Ladder safety			
Lock-out and tag-out protection utilized; GFCI used				Welding hoses and cords controlled-out of the way			
Terminal boxes securely covered				Flammables and combustibles in proper containers, stored properly; NO smoking			
Open circuits protected on temporary panel				Approved containers used, protected against damage & labeled			
Temporary lighting properly installed and in good condition				Flammables stored separate from O2 cylinders			
Tools and cords in good condition, cords not frayed, ground prong present				Smoke detectors covered against dust and debris or programmed out			
Mechanical guards in place and working properly							
Defective tools tagged "do not use"							
Personal Protective Equipment							
Appropriate PPE used: (circle) eye protection, face shields, respirators, masks, hard hats, hearing protection, other:				Stepladders fully open when in use			
				Extension ladders tied off/secured			

Signature and Date:

Healthcare Construction Certificate - Level 1

**If you see something,
say something.**



Healthcare Construction Certificate - Level 1

Avoidable Risk



Healthcare Construction Certificate - Level 1



Healthcare Construction Certificate - Level 1

Poll Questions

Interim life safety works primarily operates under what principle ?

- a) That buildings burn (A)
- b) Offsetting safeguards (B)
- c) Sprinkler protection (C)
- d) Interim situation (D)
- e) B and D
- f) All of the Above



Healthcare Construction Certificate - Level 1

Poll Answer

Interim life safety works primarily operates under what principle ?

- a) That buildings burn (A)
- b) Offsetting safeguards (B)
- c) Sprinkler protection (C)
- d) Interim situation (D)
- e) B and D
- f) All of the Above



Healthcare Construction Certificate - Level 1

Poll Questions

When construction timeframes become extended, temporary walls tend to become ?

- a) Smoke tight
- b) Non-combustible
- c) Floor to deck
- d) Fire rated



Healthcare Construction Certificate - Level 1

Poll Answer

When construction timeframes become extended, temporary walls tend to become ?

- a) Smoke tight
- b) Non-combustible
- c) Floor to deck
- d) Fire rated**



Healthcare Construction Certificate - Level 1

Questions



Healthcare Construction Certificate - Level 1

Thank you!
Please fill out this
brief evaluation.

Scan this QR Code now
or you can wait for the follow
up email tomorrow with a
link to the survey.



Healthcare Construction Certificate - Level 1