



NEWSLETTER

4TH QUARTER

VOLUME 19

DECEMBER 2009

Inside

This Issue...

2010 Calendar	2
Chapter II	3
Chapter IV	4
Education	5
Webinar	6
Subscription	
Chapter I	7
Chapter III	8
Conference	10
ASHE Region 6	12
ASHE Region 6	13
Conference	
Members Only	14
Website	



Wade Rudolph
WHEA President

Reflections on the past year...

This past year has been quite a ride for most of us. As the economy slowed, all of healthcare was forced to realign in some shape or form. This realignment has made all of us better in doing what we do. I have witnessed relationships between members grow stronger and new relationships develop. This growth and supportiveness of each other is what makes the WHEA special. Sure we all have a job to do, but the fact that we can surpass the superficial and pull together to support our industry is special and unique to Wisconsin. WHEA has made great strides in positioning itself as the premier healthcare engineering association in the nation. The implementation of the new foundation demonstrates our commitment to supporting healthcare engineering beyond just our own education. This is very exciting. Our organization is extremely blessed to have the dedicated individuals who carried this project through to implementation. Our organization is fortunate to have sponsors who see the value of our mission to their purpose and have supported the organization in many ways.

As I have had the pleasure of being a member of Chapters II, IV, and now V, I have learned that each chapter has its own special quality that when combined creates a state organization that cannot fail. The strength of the chapters is truly at the heart of what makes WHEA strong. The support for quality education programs allows great things to happen. This education improves the quality of services that we provide our employers. The quality of services provided

(continued on page 2)

2009 WHEA Sponsors

Platinum Boldt

Miron Construction Co.
Mortenson Construction

Gold

Arnold & O'Sheridan Consulting Engineers
Balestrieri Environmental & Development Inc.
C. D. Smith Construction
Fremont Industries
HDR
HGA
J. F. Ahern
J. H. Findorff & Son, Inc.
Johnson Controls
JP Cullen
Kahler Slater
KPH Construction Corp.
PBBS Equipment Corporation
Riley Construction
Ring & Du Chateau, LLP
Total Water Treatment Systems, Inc.
Tremco, Inc.
Watertech of America, Inc.
Zimmerman Architectural Studios, Inc.

Silver

Bartingale Mechanical, Inc.
Beeler Construction, Inc.
Berghammer Construction Company
Complete Control
Engberg Anderson
Flad Architects
GRAEF
Kleen Air Service Corp.
Mared Mechanical Contractors Inc.
Market & Johnson
MAVO Systems
The Selmer Company
Staff Electric Co., Inc.
Techline USA
Trane

President's Message

(continued from page 1)

by engineering has improved. This improved quality decreases healthcare expenses, which continually results in lower cost healthcare for all the citizens of Wisconsin.

Moving forward into next year...

Understanding where WHEA has been allows us to look forward into the future. With the national debate regarding healthcare developing, change will again be upon the industry. When this change is finally determined, we can be assured that WHEA will be there to provide high quality education to assist us all in the transition to what healthcare will be.

With great optimism we move forward to a new annual conference location (La Crosse) this year. This larger venue will allow more specialized training to meet more individual needs. The conference committee continues doing great things.

The education committee always keeps programs pertinent and fresh; even in challenging financial times. They will continue to provide the best value for training in the Midwest.

The chapter members on all the standing committees and the board continue to push WHEA into bigger and better initiatives which only support and strengthen the organization. With this effort, I have no doubt that the year 2010 will yield great results for our profession. **THANK YOU!**

I cannot begin to say thank you individually to all the members who have made the organization as strong as it is today. Thank you to all the sponsors, members and vendors who have supported WHEA this past year.

Happy Holidays,
Wade

2010 CALENDAR

J A N U A R Y

6	Chapter VI Meeting	Noon to 3 pm
8	Education Meeting - Holiday Inn, Stevens Pt	9 am - noon
14	Chapter I Meeting	4:30 -6:30 pm
21	Chapter III Meeting	
31	Directory Advertising Deadline	
31	Directory Article Deadline	

F E B R U A R Y

11	Chapter I Meeting	4:30 - 6:30 pm
11	Chapter II Meeting	
12	Conference Meeting - Conference Call	9 am - Noon
27	Treasurer Distributes Budget Package	
28	www.whea.com Database Edit Deadline	

M A R C H

3	Chapter IV Meeting	12:30 - 2:30 pm
3	Chapter VI Meeting	Noon to 3 pm
5	Board Meeting - Glacier Canyon, WI Dells	9 am - Noon
5	Newsletter Article Deadline	
11	Chapter I Meeting	4:30 - 6:30 pm
11	Chapter II Meeting	
14-17	PDC Conference in San Diego	
18	Chapter III Meeting	
19	Education Mtg - Conference Call	9 am - Noon
26	Member Svcs Mtg - Glacier Canyon WI Dells	9 am - Noon
31	Chapter Dues State Payment Deadline	

ARCHITECTURE PLANNING INTERIOR DESIGN



**Engberg
Anderson**



PARK TOWER AT BAPTIST HOSPITAL EAST • LOUISVILLE, KY

www.engberganderson.com

Chapter II News

By Doug Dunlap, Chapter President



On November 12th Siemens hosted our Chapter II meeting at the Great Dane. The topic was Mass Notification and changes in NFPA 72, 2010. The presentation was given by Roger Henning of Siemens and he reviewed changes to the Fire Alarm Code with an emphasis on Emergency Communications. The presentation included a live demonstration of the extensive capabilities for Mass Notifications.

Howard Whittaker resigned his position effective November 30th as he will be moving to Kansas to pursue an excellent opportunity for himself. This leaves our Secretary position open.

Currently our officers are Doug Dunlap, President; Pete Goepfert, Vice President; John Pohlmann, Treasurer; and Dan Zank, Past President.

Chapter II also met on December 12th. Our host was Scott Adams of JCI and his topic was "Facilities Operations in Tough Economic Times."

The 2010 meeting schedule for Chapter II is as follows:

February 11, 2010	KJWW, Jeff Boldt
March 11, 2010	Dick Pearson, Pearson Engineering
April 15, 2010	Meriter Hospital
May 20, 2010	Banquet location to be determined
August 2010	Date and location to be determined

The membership of Chapter II for 2009 consists of 42 Full Members, 71 Associate Members, 4 Life Members, 7 Retired Members, and 1 Honorary Member for a total of 125 members. 🇺🇸



GRAEF www.graef-usa.com

Call us by our FIRST NAME.

Graef, Anhalt, Schloemer & Associates, Inc. is now **GRAEF**.
As we continue to grow in both capabilities and locations, our
new name reflects a more cohesive and dynamic company.

Chapter IV Activity Report

By Randal Wegner, Chapter President



Chapter IV hit the ground running this fall with the President attending the WHEA Board meeting and goal planning meeting held in Wisconsin Dells in November.

A review of the goals set for the Chapter includes:

Goal 1 is to increase membership by at least 5% over membership roster reflecting status October 1, 2009.

Operational Plan: Full members are at 53 and associate members are at 45 for a total of 98 members. We endeavor to in-

crease membership by 5 members by the September 2010 annual meeting.

Expected Outcome: Report to the general membership Chapter IV will be at 103 members in September.

Goal 2 is to increase communication between the memberships via electronic media.

Operational Plan: All electronic communications received will be forwarded to Chapter IV membership as allowed for information exchange.

Expected Outcome: Electronic media notices and opportunities will be communicated to Chapter IV members via e-mail whenever available. Goal of at least 1 communication per month.


Goal 3 is to provide one educational session for the Chapter members hosted by St. Joseph's.

Operational Plan: We will solicit educational offerings in which to identify an educational need for Chapter IV members.

Expected Outcome: SJH will host one educational session for members of Chapter IV before the September 2010 annual meeting.

Goal 4 is to provide financial support to the WHEA Foundation.

Operational Plan: Chapter IV members will be appraised of the good work and promise of the Foundation and asked to contribute to its ongoing success.

Expected Outcome: Chapter IV membership will provide the WHEA Foundation with a financial contribution by the September 2010 annual meeting. 



Free energy advice for healthcare facilities.
Save energy and boost your bottom line!

Studies show that healthcare facilities use more energy per square foot than any other commercial building type in Wisconsin. Focus on Energy can help you save energy and boost your bottom line.

Let Focus on Energy help you:

- Identify low-cost and no-cost ways to save energy and money
- Secure financial incentives to offset the costs of energy efficiency upgrades
- Educate your staff on energy-saving best practices

Start saving today. Contact Focus on Energy to learn how to save energy and money in your facility. Call **800.762.7077** or visit us at **focusonenergy.com/healthcare**.

 **focus on energy**
The power is within you.

©2009 Focus on Energy BP-8075-0409

Education Committee Fourth Quarter Report

By Jim Teunas, Committee Chair

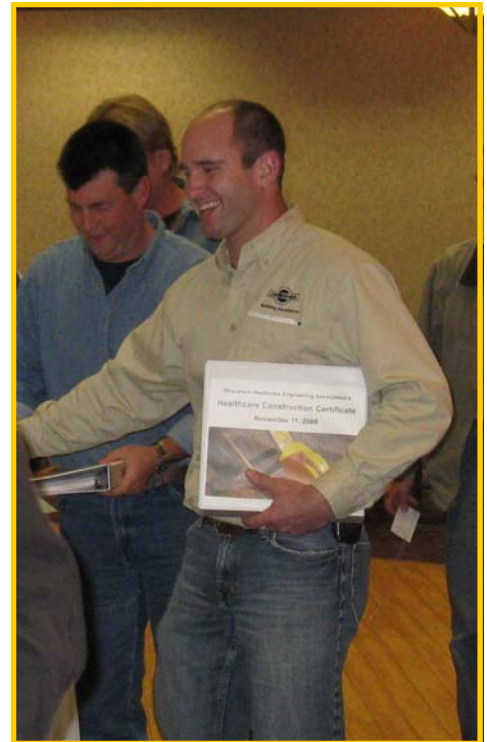


The Education Committee provided two educational programs in the fourth quarter.

On November 11, a Healthcare Construction Certificate program was held at Liberty Hall in Kimberly. Attendance was very good and as usual the Code Committee received high marks from the attendees for this important program. WHEA's HCC program meets the renewal requirements for ASHE's Healthcare Construction Certificate program and many who attended took advantage of this great opportunity. A huge thank you to the Code Committee for their commitment to this program.



A webinar "Code Refresher Introduction to Healthcare Code Standards - What's Changed?" was provided on December 17 by Jon Cechvala and Jeff Eckstein, code committee members. This was the 5th webinar that WHEA provided for the year. Those of you who had signed up for the 2009 webinar subscription received this webinar for free!



The 2010 Webinar Subscription registration is open and many of you have already signed up to take advantage of this easy to use educational tool. You will find the flyer with complete information on how to sign up on the following page. 📄



2010 Webinar Subscription Service

WISCONSIN HEALTHCARE ENGINEERING ASSOCIATION

Dedicated to Excellence in Healthcare Engineering

The Education Committee is dedicated to our Association's mission of providing quality education, advocacy and outreach within our healthcare community. We strive to develop technical and managerial program offerings that will provide valuable educational opportunities for persons responsible for areas of facility management and operation.

BENEFITS

WHEA offers web-based education programs that focus on "hot topics", code alerts and management level subjects. With the Webinar Subscription Service you sign up once and will be automatically enrolled for all WHEA webinars offered in 2010.

This service ensures that:

- You will be automatically registered for all WHEA offered webinars. A minimum of four (4) webinars per year.
- One approval and payment process for all webinars throughout the year.
- Webinars are accessible from anywhere with internet and phone access; from your office or from a conference room with your team.
- Webinars are recorded and viewable at anytime throughout the year.

SUBSCRIPTION DETAILS

- \$300 annual fee.
- Service term is based on the **2010** calendar year. One connection per subscription service. Confirmations will automatically be e-mailed for each webinar.

Register online at www.whea.com.

Go to "Education and Training" follow the drop-downs to "Program Registration" then to "Webinar Subscription Service".

If you have any questions,
please contact the WHEA Administrative Assistant at 920.779.9167.



Chapter I Activities

By Neil Jensen, Chapter President




Since September Chapter 1 has met three times. Our September meeting was held at Watertown Regional Medical Center with a presentation from WE Energies on merging strategic alliances related to reuse/reduce/recycling. The October meeting was held at Luther Manor with a spirited open forum discussion on ongoing maintenance and construction issues. The November meeting was held at Engberg Anderson with an interesting presentation from Engberg Anderson and Heneman Engineering on the demolition and rebuilding of an Oconomowoc hospital while it remained open for "business as usual". Chapter 1 has some exciting meeting locations and presentations coming up and has once again set some aggressive goals especially in these current economic times as we continue to strive to be the best we can be. John McGinnis and the bylaws committee are already starting to work on the bylaw amendments for presentation to the membership to help us attain goal # 3 as noted below.

Chapter I 2010 Goals:

1. Increase meeting attendance by 10%.
2. Make a significant donation to the W H E A Foundation.
3. Amend wording in our bylaws to make the process of nominating members for Honorary, Life and Retired consistent.

The 2010 slate of officers for Chapter 1 are as follows:

President - Neil Jensen	Vice President - Ron Heimann
Secretary - Jeff Eckstein	Treasurer - Harley Herold
Officer at Large - Sheila Semrou	Past President - Gary Karnitz

Happy Holidays from Chapter I. 

MAVO SYSTEMS A Complete Service Selection

Contact Gary Schneider at:
Gschneider@mavo.com
100 North 84th Avenue
Wausau, WI 54401
Phone 715.849.9754
Fax 715.849.9759
or visit our website at
www.mavo.com

- Asbestos and Lead Abatement
- Mold Remediation
- HVAC Cleaning and Decontamination
- Mechanical Insulation
- Interior Demolition
- Advanced Floor Covering Removal
- Epoxy Coating and Concrete Polishing
- Specialty Cleaning

MAVO SYSTEMS

Affirmative Action Employer

Watertech
of America, Inc.
INNOVATIVE
WATER
MANAGEMENT

Products & Services

- Chemical Treatment for Boilers & Cooling Towers
- Reverse Osmosis
- Chlorine Dioxide
- Softeners & Dealkalizers
- Legionella Monitoring
- Corrosion / Deposit Analysis
- Hands-Free Chemical Delivery
- Remote Monitoring
- Excellent Results you Expect and Deserve

Why Watertech?

241 Years of Experience
Wisconsin Owned & Operated



9415 W. Forest Home Ave, Hales Corners, WI 53130 • Toll Free 800-776-7068 • Local 414-425-3339 • Fax 414-425-3362 • www.watertechusa.com

Keeping Your Water Healthy

Watertech's experience in the water treatment industry enables us to quickly diagnose any water-related problems your facility may be facing. Our water management expertise includes the newest technology in chemicals, equipment and consulting.

DIOX Water Hygiene

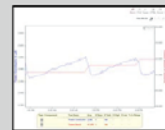
Advanced Water Disinfection



Self-contained & Safe
No Hazardous Materials
Low Operation Cost

WTeService

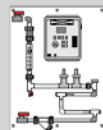
Data Logging and Communications



Track Operational Data
Alarms & Notifications
eController Compatibility

eControllers

Advanced Water System Automation



Remote Control via Internet
Alarms & Notifications
Advanced Control Logic

Chapter III Activities

By Marc Teubert, Chapter President



The members of Chapter III met at the KI Conference Center on September 24, 2009 in conjunction with the WHEA Annual Conference. Twenty five members were present at this meeting. A business meeting was conducted and eight new member applications were approved. The following meeting schedule was developed and approved for the upcoming year:

January 21, 2010

March 18, 2010

May 20, 2010

Chapter III also met on November 5th at the Stadium View Bar on Holmgren Way in Green Bay. Nineteen members and one guest were present. A business

meeting was conducted and one new member application was approved. It was learned that Dan Dallich has reluctantly stepped down from his position as Chapter III representative on the Code Committee. Chapter III wishes Dan well and thanks him for his many years of service on the Code Committee. Amy Cote has volunteered and been appointed to serve as Chapter III representative on the Code Committee. Tim Klein has stepped down from his position as one of our Chapter representatives on the Education Committee. We want to thank Tim for his years of service. Rick Voigt has volunteered and been appointed to service on the Education Committee.

(continued on page 9)



Henneman Engineering Inc.

is a proud ENERGY STAR® partner

MEP/Structural Engineering
Information Technology
Central Heating, Cooling, and
Co-Gen Plants
Industrial Technology
Emergency Preparedness
Sustainable/Green Design

Madison: 608.833.7000 | Milwaukee: 262.901.0626
toll free: 888.616.0216 | www.henneman.com - visit our new website

Additional Offices:
Illinois, Iowa, Missouri, and Texas

USGBC Member | ISO 9001:2000 Certified

715.887.4400
www.complete-control.com

SERVICES
building automation
electrical
fire & security
mechanical engineering
energy management

INDUSTRIES
health care
educational
industrial
office & commercial

Complete Control Inc.
Partnering with health services for 20 years.



Total Roofing and Building
Envelope Solutions

Tremco is committed to helping WHEA members with solutions for their building, façades, parking structures, paving, roofing, energy and sustainability challenges.

For a free diagnosis of any building envelope asset up to 100,000 square feet with your local Tremco healthcare specialist, **call 866.999.0569, or e-mail healthcare@tremcoinc.com and mention this ad.**

TREMCO
Building Life. Managed.®

Chapter III *(continued from page 8)*

Following the November 5th meeting attendees were invited to tour the WPS Green Bay power plant.

The following is a list of the New Members to Chapter III:

Mark Phillips	Pfefferle Management, Appleton	Associate Member
Kevin Wade	Pfefferle Management, Appleton	Associate Member
Mark Crowe	Pfefferle Management, Appleton	Associate Member
Gary Gooch	Pfefferle Management, Appleton	Associate Member
Jason Skilaski	Pfefferle Management, Appleton	Associate Member
William Tobin	Pfefferle Management, Appleton	Associate Member
Travis Bunn	Pfefferle Management, Appleton	Associate Member
Jerry Schimmelpennin	Theda Care, Appleton	Full Member
Greg Sabel	CD Smith Construction	Associate Member

2010 Officers:

President – Marc Teubert
Vice President – Richard Voigt
Secretary /Treasurer—Dan Loest
Officer at Large – Tony Rodman

45th Annual Conference Planning Update

By Michael Blackwood, Committee Chair



The Conference Committee has met twice since the last board meeting -- at the annual conference in Green Bay on September 22 and on October 23 via conference call to review evaluations from the 2009 conference and to begin planning for the 2010 conference to be held in La Crosse. Evaluations indicated that programs were well received with certain programs specifically singled out to return again in future years. In addition, thanks to the attendees comments, our education team has in excess of 30 programs to review and choose from for 2010. Thanks to the great response by members, guests, sponsors and vendors, the 2009 WHEA Annual Conference was a tremendous success.



www.flad.com 608.238.2661 Creating spaces for healing



www.theselmerco.com

SELMER The Selmer Co.
CONSTRUCTION SERVICES

Preferred Provider.

Hospitals ♦ Clinics
Elderly Care Facilities
Remodeling

2200 Woodale Avenue Phone: 920-434-0230
Green Bay, WI 54313 Toll Free: 800-4-SELMER

As in past years, ASHE leadership was again represented at our conference with Past-President John Wood in attendance for the entire week. John spoke to ASHE's mission and how affiliated chapters like WHEA are critical to ASHE's success. John's comments were very complimentary toward our organization and he thanked WHEA for its support to ASHE and especially our ongoing support to Region 6.

Congratulations to Tom Stank as the recipient of the 2009 WHEA Founders Award. During the presentation to Tom, WHEA President Kim Bauer recognized Tom's continued history

(continued on page 11)

Conference Update *(continued from page 10)*

of support and service to WHEA through work with the WHEA board, WHEA committees and his support of Kim and other individual members.

Congratulations as well to Steve Vinopal on his selection as WHEA 2009 Pioneer Award recipient. Letters of nomination recognized Steve for his years of service to the health-care engineering field, starting in 1974, his support to WHEA in numerous capacities and his support to both WHEA and ASHE as ASHE Region 6 Director for the past 4 years. Steve was also recognized with a "Thank You" gift from all ASHE Region 6 Chapters for his hard work and commitment as Region 6 Director.

As our conference next year will move to La Crosse and a different conference center, the committee will be reviewing numerous options for changes and additions to make your 2010 conference even better. 🇺🇸



Fremont Industries
Water Management Solutions

Fremont Focus: water, people, future

Fremont's Accreditation to be a Part of Your Team
The Fremont Difference

Fremont People
The Fremont team is an experienced and dedicated group of employees to serve you.

- ♦ 15 State Coverage
- ♦ 52 Sales Staff with Average of 12 Years Experience
- ♦ 10 Sales Staff Dedicated to Serving Wisconsin





Laboratory Support

- ♦ The laboratory support for Fremont clients and field personnel with analysis of samples and appropriate treatments.

Go Green with the Ultra Series of Products

- ♦ A Fremont exclusive line of concentrated products with a complete crystalline uniformity that achieves 100% activity. Helps to lower your carbon footprint and helps eliminate the disposal of barrels.





Fremont-eLink

- ♦ Internet-based program that allows for graphing trends, logs, product usage and test results.

Proud Gold Sponsor of WHEA
Fremont Industries Inc., 4400 Valley Ind'l Blvd. N., Shakopee, MN 55379
800-436-1238 www.fremontind.com

INTEGRATED ENGINEERING SOLUTIONS

for higher performing buildings



**ARNOLD &
O'SHERIDAN**
Consulting Engineers

Civil + Structural + Mechanical + Electrical + Plumbing + Technology

www.arnoldandosheridan.com MADISON MILWAUKEE

ASHE Region 6 Report

Steve Vinopal, ASHE Region 6 Director/WHEA Liaison



Recognition Programs:

The ASHE Board has directed that the society review the entire recognition program - including the Actions for Professional Excellence (APEX) program for awarding Seniors and Fellows, Emerging Regional Leader, Crystal Eagle, Vista Awards, President's Awards, and Chapter Levels of Affiliation programs. The board is seeking to determine if these programs currently reflect the wants, needs and future direction of the society and its members. The findings will be reported back to the board for further review.

New Committee Structure & the 2010-2012 Strategic Plan:

The ASHE Board approved a new committee structure that goes into effect in 2010. The new structure allows the society to meet the goals and objectives of the new 2010-2012 strategic plan which calls for the society to be more nimble when addressing member needs and concerns, as well as when responding to health care facilities management issues that affect the membership and the field. Information on both the new 2010-2012 Strategic Plan and the committee structure modifications will be communicated to the membership prior to year-end, 2009.

has approved investigating opportunities for creating an internship program for future healthcare facilities managers. This internship would involve students working within the health-care facility to put to practical application those theories learned in the classroom. Opportunities to create this program will be gathered and presented to the board for review.

The ASHE Region 6, 9th Annual Conference

will be held April 22 - 23 2010 in Mankato MN. The CHFM exam will be offered on Friday afternoon following the conference programming. This will provide the opportunity to take this test during the days you are away from your facility and at this site. The final details of the test are being worked out. The number of applications may be limited to a predetermined exam group; the number of exam fee waivers will be limited to a set number for our region. This and other details are being worked out and will be passed on as resolved. Please see a draft of the Region 6 Conference agenda, elsewhere in this newsletter.

I would also like to thank the WHEA Board of Directors, several great WHEA committee members and WHEA members that provided unbelievable support to me during my four years of service as the been accomplished without WHEA's support. 🇺🇸

Creation of Sustainability Toolkit:

The Board has approved the development of a Sustainability Toolkit that will assist members in understanding and creating guidelines and policies for their organization to increase its green initiatives. This product is expected to be available to members in 2010.

New Student Chapter:

The Board has approved the creation of a second Student Chapter. The new chapter will be located at Brigham Young University (BYU) in Utah. The BYU chapter will work closely with the Purdue University Chapter (IN) to learn processes for operations and share best practices.

Internship Program Development:

The Board

YOUR HEALTHCARE CONSTRUCTION SPECIALISTS



MECHANICAL AND FIRE
PROTECTION CONTRACTORS
800.532.4376
WWW.JFAHERN.COM

ASHE Region 6 Educational Conference Program Agenda

DRAFT

WEDNESDAY APRIL 21, 2010

6:30 pm	ASHE Region 6 Planning Committee Reception (Light hors d'oeuvres - beer - wine - soda provided) SV 10/02/09
---------	--

THURSDAY APRIL 22, 2010

7:00 am - 7:45 am	Registration/Continental Breakfast		
7:45 am - 8:00 am	Welcome/Opening Remarks		
8:00 am - 8:30 am	Terry Martin, ASHE President		
8:30 am - 10:00 am	Bob Bartels - Safety Management Services		
10:00 am - 10:30 am	Morning Break		
10:30 am - 12:30 pm	NFPA 99 & 2010 Guidelines for Design & Construction Doug Erickson - American Hospital Association		
12:30 pm - 1:30 pm	Lunch		
1:30 pm - 2:15 pm	Pandemic & Flu Surge Capacity Planning Marla Kendig, Mayo Clinic	Retro Commissioning (geared for facility managers) Tyson Glimme, Henneman Eng Inc	Integrated Project Delivery
2:15 pm - 3:00 pm	Pharm & Haz Waste Rob Tapp, SWDI	AHU Infection Control & Efficiency Tim Leach, Vigilair Systems Inc	Eppstein Uhen Group, Boldt, HGA, HiMEC
3:00 pm - 3:30 pm	Networking Break		
3:30 pm - 4:15 pm	Fargo Flood Situation Michelle Reitan, Meritcare	Open Discussion / Panel Bob Bartels & Doug Erickson	Retro Commissioning (geared for constructors) Tyson Glimme, Henneman Eng Inc
4:30 pm - 6:30 pm	Networking Reception - Arena		

FRIDAY APRIL 23, 2010

6:30 am - 8:00 am	Buffet Breakfast - Arena
8:00 am - 9:30 am	Clark Reed - Energy Star
9:30 am - 10:00 am	Morning Break
10:00 am - 11:30 am	Code Myth Busters - Open Floor Discussion Doug Erickson - American Hospital Association
11:30 am - 12:00 pm	Wrap-Up/Closing Remarks
1:00 pm	CHFM Test

All attendees, spouses, guests, sponsors, and speakers are invited to attend the Networking Reception on Thursday evening. Spend time in a relaxed environment renewing old friendships and creating new ones while having the opportunity to meet one-on-one with speakers and sponsors.

Get "Usernames" and "Passwords" for Access to WHEA Members Only Website *By Roger Elliott*



All WHEA members are eligible for access to the WHEA website "Members Only" pages. This is the area where the privileged information provided exclusively to our members is posted and maintained. Access to this area is restricted via use of unique user names and passwords that are set up for each member. If you are a WHEA member and have never requested a password from us, you'll need to contact our Administrative Assistant, Jane Bruvold at bruvold@sbcbglobal.net and she'll be happy to get you started. Here's the general process that we follow for all members requesting access to the Members Only pages of www.whea.com.....

User names are always the members' first initial of their first name and their last name, all in lower case -- no exceptions (example: Smokey T. Bear becomes sbear.).

Members get to pick their own password – WE DON'T ASSIGN PASSWORDS! Our preference is that the passwords are setup to be 6-15 characters, any combination of letters or numbers, upper or lower case. We suggest that members use a favorite password that they typically use for other purposes on a regular basis (makes it less likely you'll forget it.) However, some folks like to use a password unique to this application, so we'll accept pretty much anything they want to use. The only persons who will ever know what this password is (in addition to the member) are Tom Laabs, website coordinator; Jane Bruvold, Administrative Assistant; and Roger Elliott, Member Services Committee Chair. No one else will ever have access to the security system.

All these requests will be handled by Jane. I will be available for this function if Jane is unavailable.

Once the new member has submitted his/her choice of password to Jane, she will build it into the website security file, test it, and let the new member know that it's set up. Thereafter, if the password is not changed but is forgotten, the member can click onto the "Forgot Password" link on the login page and the system will automatically mail the password to the members' email address – just another reason why you need to keep all your demographic information current with your chapter Member Services representative. If you don't, you miss a lot of important WHEA communications and will lose access to the Members Only site!

If you are a new member or a member who hasn't already taken advantage of this opportunity for access to the WHEA Members Only website, please contact Jane today! There is a great deal of important information available to you, but only if you have access to the "Members Only" area of the website. 🐻

WISCONSIN HEALTHCARE ENGINEERING ASSOCIATION *Dedicated to Excellence in Healthcare Engineering*

Welcome to the WHEA web pages for Members Only!

Your membership in Wisconsin Healthcare Engineering Association provides services and opportunities of tremendous value. Now your membership data is secure within this Members Only website, and over time a great deal of additional information will be offered.

Select options from the menu tree on the left without having to leave this secure Members Only site!

