

Wisconsin Healthcare Engineering Association Newsletter

October 2013

Volume 23, 3rd Quarter



Inside this issue:

Outgoing President	2
Calendar	3
Photos Needed	3
Codes & Standards	4-6
Chapter I	7
Founding Father Award	7
Robert H Botts Award	8
Chapter IV	9
Chapter III	9
Conference Committee	10
Chapter V	11
Chapter II	11
Education Committee	12
Webinar Subscription	13
MECH News	14
Employment Opportunity	14

Presidents Message

As your new WHEA President, I would like to thank you for entrusting me with this responsibility. It is an honor to serve the association and work with an incredible team. 2013 has been an interesting year in terms of healthcare and the challenges that have not been fully revealed. 2014 should prove to be another challenging year and we need to be prepared.

Change in our industry is happening and will continue. I believe we can play a major role and we have an opportunity to be leaders in

this change as opposed to having change applied to what we do. Because we are professionals and have a network like WHEA, whose members have centuries of collective experience, there is tremendous opportunity for continuous improvement. I challenge you to get outside of your comfort zone and take on new roles within your organization so that you are leading change and are part of the decision making process. Talk to your patients and find out what could make their visit bet-



*Gordon Howie
WHEA President*

ter. Meet with clinical leaders to see what improvements you can initiate. Your role in the continuum of care is more important than ever.

(continued on page 2)

2013 PLATINUM SPONSORS

The Boldt Company

J.P. Cullen & Sons, Inc.

Miron Construction Co., Inc.

2013 GOLD SPONSORS

Balestrieri Environmental & Development

C.D. Smith Construction, Inc.

Fremont Industries, Inc.

HGA Architects and Engineers

J. F. Ahern Co.

JH Findorff & Son, Inc.

Johnson Controls

Kraemer Brothers

Mortenson Construction

PBBS Equipment Corporation

Riley Construction Company, Inc.

Ring & DuChateau, LLP

Total Water Treatment Systems, Inc.

Tremco Roofing and Building Maintenance

Zimmerman Architectural Studios

2013 SILVER SPONSORS

Architectural Design Group, LLC

ASI Signage Innovations

Bartingale Mechanical, Inc.

Beeler Construction, Inc.

Berghammer Construction Corp.

Brubaker Architects, Inc.

Complete Control, Inc.

Engberg Anderson, Inc.

Eppstein Uhen Architects

Faith Technologies, Inc.

Flad Architects

Fowler & Hammer, Inc.

General Heating and Air Conditioning

GRAEF

Grumman/Butkus Associates

Hooper Corporation

Kahler Slater

Mared Mechanical Contractors, Inc.

Market & Johnson, Inc.

Medcare Products

NEI Electric

Pieper Electric, Inc.

Plunkett Raysich Architects, LLP

Poellinger Electric, Inc.

Purely Med Gas, Inc.

Samuels Group | Environments

The Samuels Group, Inc.

ServiceMaster Recovery Services

Siemens Industry, Inc.

Sika Corporation

Staff Electric Co., Inc.

Trane

President's Message (continued)

In September we experienced yet another fantastic annual conference and technical exhibition. It was great to see some familiar faces and make new friends. The education provided was exceptional and we were excited to interact with and hear from our colleagues from the Wisconsin Department of Health Services. We were also honored to have Mr. Mark Kenneday, American Society for Healthcare Engineering President, speak and attend the annual banquet and awards ceremony along with his lovely wife, Maria. I would like to personally thank the Conference Committee, the Resource Committee, and the Education Committee for putting it all together. I would also like to thank our exhibitors and sponsors for their continued support. A special thanks is in order for our Platinum Sponsors – JP Cullen & Sons, The Boldt Company, and Miron Construction.

As we finish out 2013 and roll in to 2014, WHEA will be here to support its members through education, networking, and advocacy. Together we will continue to provide the best healthcare facilities for our patients as we lead change and meet inevitable challenges.

Sincerely,

Gordon Howie, MSPM,
PMP, CHFM
WHEA President

Outgoing President Message

By Dick Lange, WHEA Past President



My term as WHEA President is over. My best wishes to incoming President Gordy Howie. I do not have a bit of doubt that he will be one of our organizations best leaders. He has the youth and vision that is needed to keep WHEA the industry leader as we advocate for the healthcare engineering field.

In the short year that I have been President we have all seen change. And change at an unprecedented rate. The "Affordable Healthcare Act" will kick in full throttle in 2014 and the impact to our organizations will be staggering. This past year, through implementation of not only specific reimbursement options as well as the sequestration, I have seen 58 positions eliminated in my facility. Other organizations in my corporate structure have also lost as many or more. These positions represent our colleagues and our friends. Through no fault of their own. It has devastated lives and will continue to impact operations not only in Wisconsin but nationwide. Our organization must be bold to face this continued change.

No longer can we operate as we have in the past. We must evolve. And quickly. We must continually look for ways to educate our membership. We must look to the tools of the times. Our Education and Professional Development committee has met the challenge in the past and will continue to find ways to deliver value to our membership. As these educational resources dry up at the local level we must as an organization find ways to augment our membership's ability to attend these educational offerings.

Our quest to simplify codes that impact our operations will continue to be a focus of our Codes and Standards Committee. This group of individuals has made great strides in this effort and continues to provide value to our membership.

We have a lot of "graybeards" in our leadership positions. These folks have given much effort over many years to make our organization what it is. We need folks to step up and take the reins of responsibility. New blood will bring new vision, new ideas and new enthusiasm to our organization. The graybeards will continue to bring wisdom of the years and serve in other capacities such as the Resource Committee that has been such an invaluable help to all of us.

This year makes 35 years for me in healthcare. I have met a lot of good people. Many very good leaders and friends. My membership in WHEA has helped me over these years and leadership positions within WHEA has provided opportunities for me and has made a difference in my ability to weather the storm of change in this business.

I want to thank everyone that has helped me over the years. WHEA will continue to be the beacon on the hill for all who make healthcare engineering and maintenance their livelihood. We will continue to serve our membership as those before us have done.

Thank you for this opportunity to be your President and God speed to President Howie as he takes on this responsibility.

Dick Lange
WHEA Past President

Calendar

If you have any changes or additions to this calendar please email them to bruvold@sbcglobal.net

Fri Oct 25, 2013	Newsletter Mailing Deadline
Tue Nov 14, 2013	WEBINAR "Plan Review" 9:30 am - 11:00 am
Tue Nov 19, 2013	Code Committee Meeting 12:30 pm to 4:00 pm
Fri Dec 4, 2013	Education Program "Healthcare Construction Certificate" Marriott, Middleton
	Member Services Meeting 1:00 pm to 4:00 pm Glacier Canyon, WI
Fri Dec 6, 2013	Newsletter Article Deadline
Fri Dec 6, 2013	Board Meeting 9:00 am - noon - Glacier Canyon
	Budget Approval To Board
Thu Dec 12, 2013	Chapter IV Meeting - Wausau Midway Motor Lodge
Fri Dec 20, 2013	Newsletter Mailing Deadline

Jane is in the process of putting together the 2014 calendar. As soon as you have your meeting dates or other important items ready to go on the calendar, be sure to email them to her. During the year, be sure to check the calendar on the website to make sure all is correct. Thank you!

Photos Needed

Jane needs photos of all the incoming board members. If you have a stock photo that you can email her please do so. If not, you can have someone at your facility take your photo and email it to Jane also. A few rules to remember when taking a photo:

- Take a head shot (upper chest and up)
- Stand about 4 feet away from a light colored wall (this stops the shadow around your head).
- Take 2 or 3 and send all.

Below are the photos I need:

Tim Ehlers - Chapter II President

Tom Evers - Chapter III President

Dennis Kwasny - Chapter IV President

Corey Fedie - Chapter V President

Kevin Feyen - Chapter VI President.

Because Knowledge
Does Make a Difference



Ahern holds **34% more** WHEA Healthcare Construction Certificates than its Closest Competitor*

*Source: WHEA HCC Renewal List



800.532.4376 | www.jfahern.com

Codes & Standards Committee Report



Jeff Eckstein
Co-Chair



Jon Cechvala
Co-Chair

As reported at the 2013 WHEA Annual Conference, there are several issues that will have a significant positive impact to healthcare facilities. These hot topics are CMS Waivers and the potential adoption of the 2012 Life Safety Codes:

CMS Waivers

1. Dialysis Facilities – can be located in a B occupancy when not adjacent to high hazards and exit is at grade. Refer to CMS Memo S&C 13-47 for more specific detail.
2. Life Safety Code (LSC) and NFPA 99 – Below is a brief synopsis of the waivers. Please refer to S&C memo 13-58 for additional info. The following issues are now addressed by categorical waiver.
 - a. Medical Gas Alarms: can now use computer for 1 of the 2 required master alarms.
 - b. Openings in Exit Enclosures: allows existing doors to mechanical spaces to remain.
 - c. Emergency Generators: annual test run time reduced from 2 hours to 1.5 hours.
 - d. Doors: can now lock doors for security risk and patient safety and have more than 1 delayed egress locks in an exit path.
 - e. Suites: increased size from 5000sf to 10,000sf; can now exit from suite to suite; and 1 exit can be to stair, passageway, or exterior door.
 - f. Extinguishing Requirements: vane type and pressure switch type of water flow alarms testing – changed from quarterly to semiannually; electric motor pumps – changed weekly to monthly.
 - g. Recycling Containers: increased size from 32 gallon to 96 gallons
 - h. S&C Memo 12-21: initially required final CMS approval, but now current Categorical Waiver process applies

Note: If a facility chooses to use one of these waivers, it must in compliance with all other applicable 2000 LSC provisions, as well as with applicable sections of the 2012 LSC.

NFPA Life Safety Code – 2012 edition

When the 2012 LSC is adopted – likely in 2015, all of the referenced standards (like NFPA 72 and 99) will become the most current edition in available at the writing of the 2012 LSC. The Code Committee is looking into developing a Cross Walk between the currently adopted and yet to be adopted reference standards.

The Code Committee continues to serve WHEA members in 3 areas:

- Providing timely **Code Alerts** updates
- Participating in **Advocacy** efforts
- Conducting code and construction related **Education** programs

(continued on page 6)

SUSTAINABILITY / SOLUTIONS / COMMUNITIES / DREAMS / INNOVATION / RELATIONSHIPS

innovation

SUSTAINABILITY / SOLUTIONS / COMMUNITIES / DREAMS / INNOVATION / RELATIONSHIPS

At MIRON CONSTRUCTION, our goal is to be innovative. We never want to be constrained by stifled thinking. From technologies like **BUILDING INFORMATION MODELING** to strategies like **EXPERIENCE-BASED DESIGN**, we break the mold and start thinking about what your facility could be, not just what it's expected to be.

The healthcare construction experts at Miron Construction work collaboratively with design partners and owners to create facilities that will serve as **STRATEGIC COMPETITIVE WEAPONS**, helping owners best serve their customers and set them apart within their industries.

Join the conversation at miron-constructionnews.com

An equal opportunity affirmative action employer.

Miron
Building Excellence
miron-construction.com

Code Committee Report *(continued)*

Goals Update:

1. Continued support of WHEA through:

Code Alerts
Education
Advocacy

Measurement of Success: Development of Code Alerts required informing the membership on codes and standards and successful completion of the following goals

Status: In progress

2. Support the Education committee as a resource for their education programs that align with WHEA's mission.

Spring Code Conference - COMPLETE
Annual Conference Program - COMPLETE
Web Based Code Update as needed

Measurement of Success: Successful completion of these educational programs by 12/31/13

Status: In progress

3. Provide a minimum of two (3) Healthcare Contractor Certificate programs working with the Education Committee.

Measurement of Success: Successful completion of the at least 3 HCC programs by 12/31/13.

Status: In progress. 4 programs are scheduled for 2013.

March 6th – Sheraton Milwaukee-Brookfield - COMPLETE

June 19th – Eau Claire/Chippewa Falls area - COMPLETE

September 4th – Green Bay area - COMPLETE

December 4th – Madison area

4. Support WHEA members with active participation on advocacy efforts at the National and State level regarding development of new or revisions to existing healthcare code and standards.

National: FGI, ASHE Advocacy Liaison, NFPA, ASHRAE, DOE, ICC

State: DSPS (formerly COMM), DHS

Measurement of Success: Representation on the preceding groups

Status: In progress

Code Alerts:

The following codes have been reviewed:

Code Alert 25 – Medical Gas System Preventative Maintenance (Reviewed and is OK as is)

Code Alert 34 – Medical Gas Cylinders - Securing & Storing (Reviewed and is OK as is)

Code Alert 35 - CMS Corridor Width/Protrusion Rule (Updated)

3 additional Code Alerts will be reviewed this year.

The Committee is tracking the following issues for potential impact on the membership.

- CMS Occupancy Classifications
- CMS Life Safety Code Component for ESRD- End Stage Renal Dialysis Centers.
- Wisconsin Department of Commerce's potential Adoption of FGI – Facility Guidelines Institutes Standards i.e. 2006 or 2010 editions.
- ASHRAE 170 and New Energy Standards.
- CBRFs
- Storage in Hospital and Ambulatory Surgery Operating Room Suites and Spaces.& OR's
- Fire Alarm Testing
- Utility Load Curtailment - Generator Emissions during Peak Shaving

• OR's - Wet Locations
(continued on page 7)

zimmerman
ARCHITECTURAL STUDIOS

Kraemer Cancer Center
Froedtert & The Medical College of Wisconsin
Cancer Network



Zimmerman Architectural Studios is a single source planning and design solution dedicated to serving Wisconsin healthcare providers. Our experience spans the continuum of healthcare needs -- from pediatric care, wellness centers, clinics and medical office buildings to hospital, specialty practice, assisted living and hospice care centers.

For more information, please visit us online at www.zastudios.com





ARCHITECTURE | ENGINEERING | INTERIORS | PLANNING | LANDSCAPE ARCHITECTURE
 2122 West Mt. Vernon Ave. | Milwaukee, WI 53233
 414-476-9500 | www.zastudios.com

Codes and Standards (continued)

- DHS Waivers
- ASHRAE 188 Legionella standards
- CSI Cabling
- NFPA 101 – 2012 edition
- NFPA 99 – 2012 edition
- DHS 124 update

Advocacy:

ASHE Liaison Committee - The Code Committee will be represented by Wade Rudolph with Jon Cechvala and Jeff Eckstein as back up.

FGI – Facilities Guidelines Institute - Jon Cechvala, Wade Rudolph and David Soens participated in the third session of the 2014 edition revision process in April in St Louis.

ICC - The International Code Council (ICC) is conducted final hearings October 24-28, 2012 in Portland OR to determine what will be included in the 2015 edition of the I-Codes. Jon Cechvala represented WHEA at the hearings.

NFPA 99 - new proposed Standard for Healthcare Facilities. The committee proving input through Tom Spremo.

ASHRAE 90.1 Energy Code - Jeff Boldt is a voting member and chairs the Healthcare Working Group

ASHRAE 62.1 - Jeff Boldt is a voting member

ASHRAE 170 - Jeff Boldt is a voting member

Advanced Energy Guide for Small Healthcare Facilities. Jeff Boldt was one of the authors

Advanced Energy Guide for Large Healthcare Facilities. Jeff Boldt was one of the authors

State of Wisconsin – Department of Professional Services Commerce. The committee is advocating at the state level by participating on:

- Electrical advisory committee: Gordy Pierret and Tim O'Rorke
- Plumbing advisory committee: Brian Koca, Jeff Boldt, and Wade Rudolph
- Elevator code advisory committee: Greg Graunke

State of Wisconsin – DHS Relationship Enhancement Committee. The Jon Cechvala is representing the committee by participating on this committee.

State of Wisconsin – DHS: Code Work Groups – now defunct

IMC: Jeff Boldt was a member of the advisory council

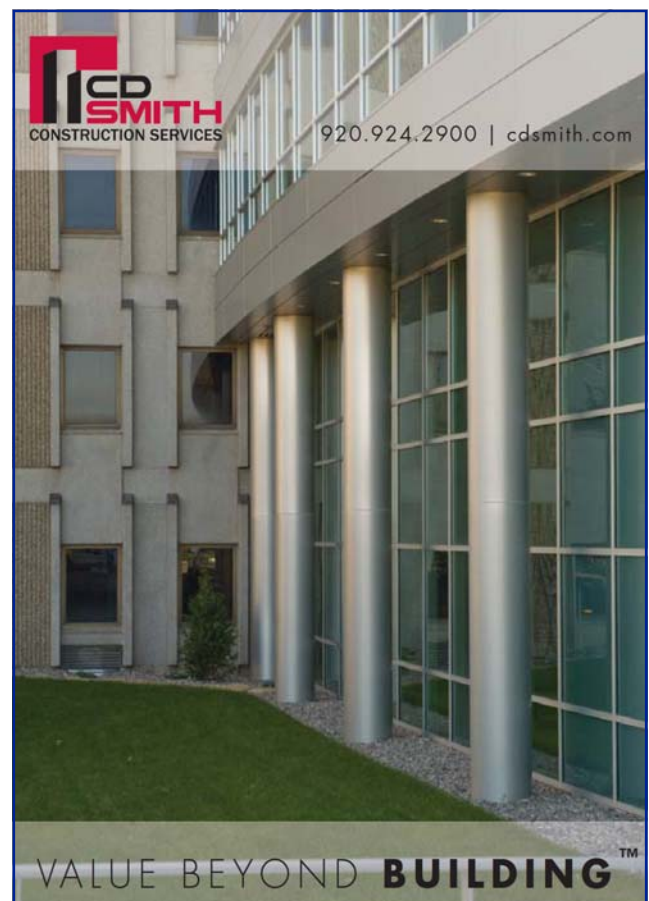
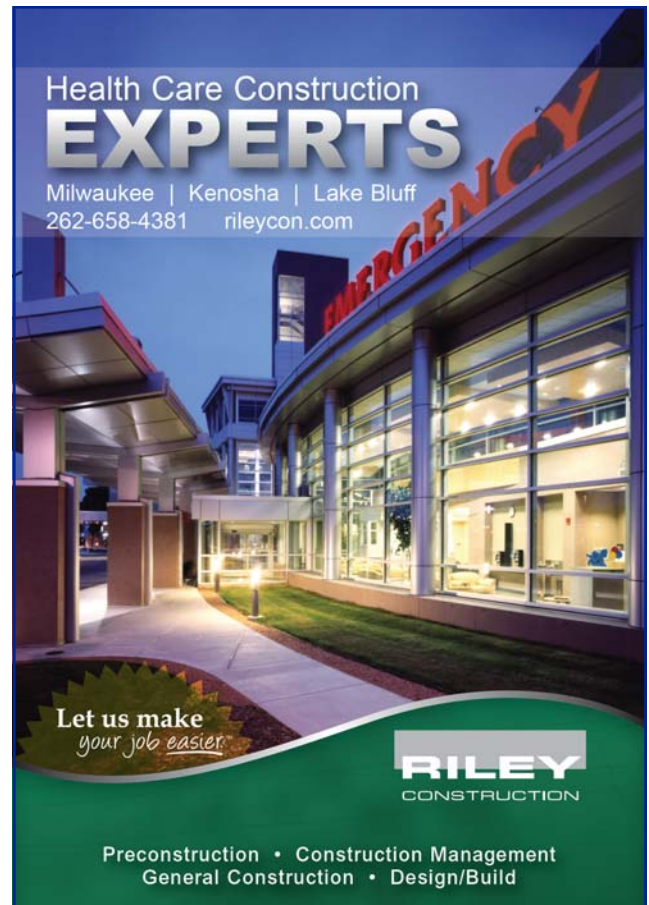
IECC: Jeff Boldt was a member of the advisory council.

Education:

Refer to 2013 Goals

Respectfully submitted

Jeff Eckstein and Jon Cechvala



Chapter I Report



*Harley Herold
Past President*

Chapter one has been working hard towards meeting its goals this year. One of these goals was to improve the Mechanics involvement with the organization. We had an opportunity to send five MECH members to the state annual conference. There has been nothing but positive reviews from the mechanics that attended. One of the mechanics was so impressed he is becoming a full member. A major step to improving the mechanic member involvement is communication. We have found after talking with the mechanic members they are not aware of all that WHEA has to offer. Our email and phone numbers for the MECH members are not complete at the state website. Chapter I is going to work to get the managers, directors and Vice Presidents to improve this information so that we can start telling these members what WHEA is all about.

Chapter I has also been moving to make WHEA Chapter I meetings a place where its members want to be. We do this by having great places to meet, outstanding education, and most of all giving the members time to get to know each other on a personal level. We are

(continued on page 8)

Founding Fathers Award Presented to Marc Teubert

By Dick Lange

When I realized that one of my duties at this conference was to award the Founding Father's Award I gave much thought to this. All my life I have seen folks that quietly serve and do their jobs without fanfare or accolades.

They never seek recognition nor do they complain when others around them receive praise. Often times for work that they had a great part in.

Every great organization has these people. They can go their entire careers simply accomplishing their tasks and making others look good.

This organization has many of these folks. No matter

how difficult the job or the many hours and deadlines. These people make us the organization that we are.

This gentleman has held many positions of leadership not only in his local chapter but also at the state level. His most recent body of work was to compile the information that allowed us to achieve the Platinum Award and continue at that level for another year; which is an honor.

I was truly honored to recognize one of these quiet leaders. The 2013 Founder's Award was presented to Marc Teubert.



KRAEMER BROTHERS CONSTRUCTION



A PRESCRIPTION FOR **INSPIRED CARE.**

JUST AS TALENTED PHYSICIANS AND NURSES oversee a quick and safe healing process for their patients, our construction crew provides the professional skill and service that healthcare environments demand when **changes and improvements** are made. Just as patients are motivated by improvement to their well being, healthcare professionals are inspired by improvements to their work environment. Let our **approach to construction** improve the way your staff and facility provide healthcare. You will be inspired through the design phase to project completion to move-in day and beyond.

To learn about the Kraemer Brothers way of building hospitals, clinics and medical offices, please contact Ryan Kraemer or Greg Callin.

CONSTRUCTION. MANAGEMENT. PARTNERING.



Just what our clients ordered.

New 143,000-square-foot Sauk Prairie Memorial Hospital
May 2012 - December 2013 Construction



www.kraemerbrothers.com / 925 Park Avenue, Plain, WI 53577 / ph 608.546.2411

2013 Robert H. Botts Engineering Pioneer Award

The Robert H. Botts Healthcare Engineering Pioneer Award is presented to a WHEA member in recognition of significant achievement and contributions to the profession of Health Care Engineering in the area of facility maintenance and construction management.

The 2013 Pioneer Award recipient, Roger Haines, has served as a member of two state healthcare engineering associations; one in Minnesota and the other WHEA. He has supported both in multiple ways. As a charter member of WHEA



Roger Haines

Chapter VI, Roger worked hard to get that group off the ground and running. Roger has never hesitated to jump in and take on a new challenge. He is a thinker and a planner.

When the WHEA conference committee was first established Roger and his wife, Noreen, became the architects and contractors that built the infrastructure of WHEA's original Annual Conference Technical Exhibition. Roger continued to manage that program for the next 15 years. He also served as the co-chair of the ASHE Re-

Chapter I (continued)

working to give our members a personal reason to attend meetings it is where our friends are. We always serve a good meal and some members have brought their wives to meetings when we go to special places. At the meetings we find resolutions to issues we have at work and many times just listen to personal stories that we can all laugh about. Take care of the person first and that person will only grow to help the WHEA organization become better.

Meetings this year

September 12th Gateway Technical College in Kenosha where they wanted to learn from us what it takes to put together a healthcare mechanic program. This was a very productive meeting and the school was very grateful to have WHEA come

down to talk with them. The meeting started with a bus trip and a picnic lunch on the way, all that attended had a great time. The schools facility was outstanding.

October 10th We met at Waukesha Memorial Hospital where we started with pizza for everyone. Our education was on Commissioning by Tyson K. Glimme P.E., QCxP Henneman Engineering Inc. This was a great subject it touched on many aspects on of facility on going commissioning, as well as construction commissioning. Tyson had a great presentation.

November 14th meeting will be at the new Ahern Silver Leed Certified Building we will be having education on fire suppression systems and have a tour of the new facility.

Chapter IV Report

Chapter IV offered 4 meetings for membership since the State convention 2012, we are pleased to report 3 of these gatherings provided valuable training and learning opportunities for our members, along with some time to share fellowship and discuss challenges that seem common in today's healthcare industry. One of the meetings gave free of charge opportunity to Non WHEA members so they could benefit from an educational presentation and see what we can do for our members. It was well received and attended with new members joining. Future goals continue to be membership involvement, training, and promoting WHEA mechanic certification.

Chapter IV has much to be thankful for, a large part is due to the hard work and diligence for our Secretary treasure Charles Kosta and upcoming president Dennis Kwasny along with fellow chapter IV membership stepping up and getting involved in open roles at the state committee levels. It has been a privilege for me personally to have been chosen and to represent our WHEA organization as chapter president, my thanks to all for helping me, mentoring and wishes for another successful year to Wisconsin Healthcare engineering association.



*Darwin "Duke" Cook
Past President*

Chapter III Report

Chapter III's most recent and last meeting of the year was held on May 16, 2013, at the Boldt Company in Appleton, WI. This meeting was held in conjunction with the 2nd Annual WHEA Chapter III Banquet.



*Amy Cote'
Past President*

Twenty members and two guests were present at the business meeting. There were two educational programs provided; Focus on Energy by Tim Dantoin and Sustainability provided by Paul Linzmeyer with ThedaCare.

The new 2013 elected officers were announced and are:

President: Tom Evers, Johnson Controls, Appleton

Vice President: Kari Delsman, Holy Family, Manitowoc

Secretary/Treasurer: Amy Cote', CEC, Green Bay

Officer at Large: Tammy Hintz, Mercy Medical, Oshkosh

The Banquet was very successful with many Associate Members providing the meals and various door prizes.

Are You A
New WHEA Member ?

Or

Current Member Without
Members Only Website Access?

Email Jane at bruvold@sbcglobal.net with what you would like for a password and she will set you up with members only access. It's fast and easy.

If you do have access, take a minute to go into the database and doublecheck your listing. Send Jane any edits.

Conference Committee Report

The 2103 WHEA Annual Conference is history and was again a very successful conference. Evaluations have been reviewed and scores were extremely positive. The Conference Committee also received a number of comments with suggestions and ideas for speakers and programs for future conferences. Although final numbers are not complete it appears that the conference was also a financial success.

The committee would like to thank our attendees, sponsors and vendors for making the 2013 conference a huge success. Numbers for this year's conference indicate an attendance of 228 including one-day registrants, which again breaks the record for attendance. In addition the Technical Exhibition was sold out filling 167 booths including 1 WHEA booth and 4 double booths with a total of 158 exhibitors.

While a number of the 2013 committee goals revolve around the conference, I can report that these goals have been met, with other goals continuing to be worked on as we plan for future years.

The committee would encourage additional comments and ideas to meet your needs as we continue to plan for the 2014 program.


Respectfully submitted,
Michael A. Blackwood



*Mike Blackwood
Conference Chair*

**Healthcare Electrical Construction,
Service, Maintenance & Systems**

65 Years of Customer Care



PIEPERPOWER®

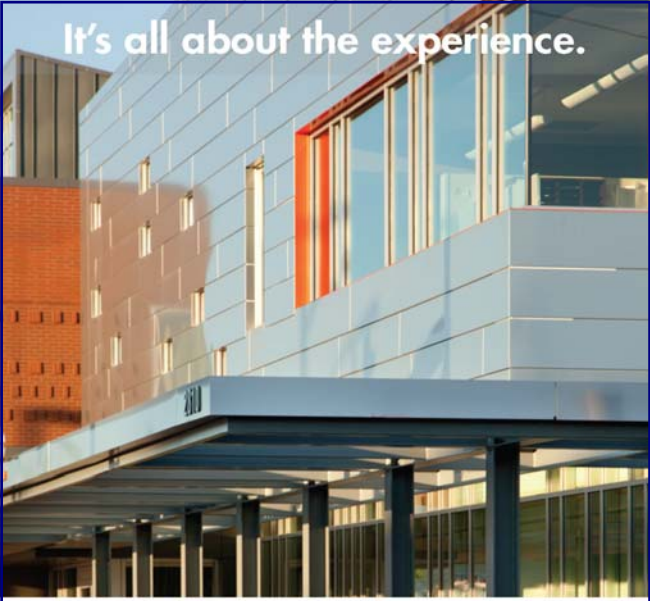
www.pieperpower.com www.systechwi.com

6 Offices Across the State to Service Your Facilities:


Pieper Electric, Inc.

Milwaukee Madison Park Falls Neenah Merrill Kenosha
414-462-7700 • 608-836-7072 • 715-762-2659 • 920-886-6800 • 715-539-2877 • 262-658-1888

It's all about the experience.



Architecture • Process Improvement • Interior Design
Civil • Electrical • Mechanical • Structural • Telecommunications



Architects and Engineers

Jenny Basile | 414.278.3424 | www.hga.com

Chapter V Report

Chapter V has met twice this 2nd quarter.

The June 20th chapter meeting was held at the Rolling Oaks golf club in Barron WI. Education was provided by Ayres associates on Sustainable landscaping and design. After the Educational sessions, members partook in the Chapter Golf outing.

The Last meeting held was at Sacred Heart Health in Eau Claire, WI. An education session for Thermal imaging was provided.

A new slate of officers were voted in for 2014 Chapter V. The next meeting will be held in October 2013, at Emerald Ridge in Menomonie. At that meeting, the new slate of officers we begin managing chapter activities.



*Bob Dubiel
Past President*

Chapter II

Chapter II met last at our annual golf outing held at Lake Windsor Golf Club. The weather was perfect and we had over 60 participants. Our golf outing meeting has historically been abbreviated and though this year's was as well, we did take care of some new business.



*Derek Marshall
Past President*

Our incoming Chapter II officers were approved. Starting at our Chapter II meeting at the Annual Conference our officers will be as follows:

President – Tim Ehlers
Vice-President – Tony Lewis
Secretary – Debbie Scherer
Treasurer – John Pohlmann

We also voted on the allocation of state dues money not being assessed this year to benefit our chapter member's educational goals. As part of our incentive program to increase chapter meeting attendance we are going to pay for conference registration for all members that met the criteria for the original incentive.

We also approved the remaining money to be spent on a one-day educational conference to be free to all Chapter II members. This one-day conference will present educational speakers and topics that our annual conference time doesn't allow for, but will provide a benefit to our membership.

It has been an honor and very rewarding experience in serving Chapter II as an officer and I thank our membership sincerely for the opportunity.

Celebrating **20 Years** of
Medical Gas Education

*Professional.
Technical.
Experienced.*

Trusted.

tom@purelymedgas.com

PURELY

MED GAS

www.purelymedgas.com
414.699.4757



GRAEF

collaborate / formulate / innovate



Structural
Site/Civil
Landscape

Parking/Traffic
MEP
LEED/Sustainability

HEALTH

www.graef-usa.com

beelerconstruction.com

Did You Know?

262-252-7000

**Our Commitment to
Quality Healthcare
Construction...**



Joint Commission

CMS Problems...

We can help!!

- * General Contractors *
- * Design Builders *
- * Construction Managers *

Menomonee Falls, WI



Education and Professional Development Committee Report



*Jim Teunas
Co-Chair*

As you may have noticed by the header the Education committee has had their name change approved. As a committee we work hard to provide site-based and web-based educational opportunities as well as Healthcare Construction Certificates, Contact Hours, and Continuing Education Units (CEU's) to support WHEA's members credential requirements. We now have a name that truly reflects more completely what we do.

The Education and Professional Development (EPD) committee has provided the following education sessions in the 3rd quarter:

7/30 "NFPA 13 and NFPA 25 Fire Protection Overview" Fairfield Inn, Weston

8/6 Webinar - "RetroCommissioning - Maximize Your Building and Facility Team Performance"

9/4 - WHEA's "Healthcare Construction Certificate (HCC)" Aurora Baycare Sports Medicine Building, Green Bay

9/12 -Webinar - "Navigating the Codes"

10/9 - "Diagram Reading", Glacier Canyon, Wisconsin Dells

There are 2 programs on the upcoming calendar to date:

11/14 Webinar- "Plan Review" presented by

Henry Kosarzycki and Bill Lauzon. Registration is now open at www.whea.com

12/4 Site Based - "Healthcare Construction Certificate" presented by members of the WHEA Code Committee, Marriott Madison West, Middleton

The 2014 Webinar Subscription program is now open for registration at www.whea.com under Education. See page 12 for the information flyer.



ServiceMASTER

Restore

**ServiceMaster
Recovery Services**
www.smrecover.com
1-800-559-9070

*The One Name You Have Come to Trust
for Over 90 Years*

INTEGRITY
QUALITY **STAFF
STAFF
STAFF** EXPERIENCE
ELECTRIC COMPANY
MILWAUKEE
MADISON

262.781.8230 / 608.222.7353
www.staffelectric.com

*Electrical Contractors & Engineers
Structured Cabling / Design Build*



2014 Webinar Subscription Service

WISCONSIN HEALTHCARE ENGINEERING ASSOCIATION

Dedicated to Excellence in Healthcare Engineering

The Education Committee is dedicated to our Association's mission of providing quality education, advocacy and outreach within our healthcare community. We strive to develop technical and managerial program offerings that will provide valuable educational opportunities for persons responsible for areas of facility management and operation.

BENEFITS

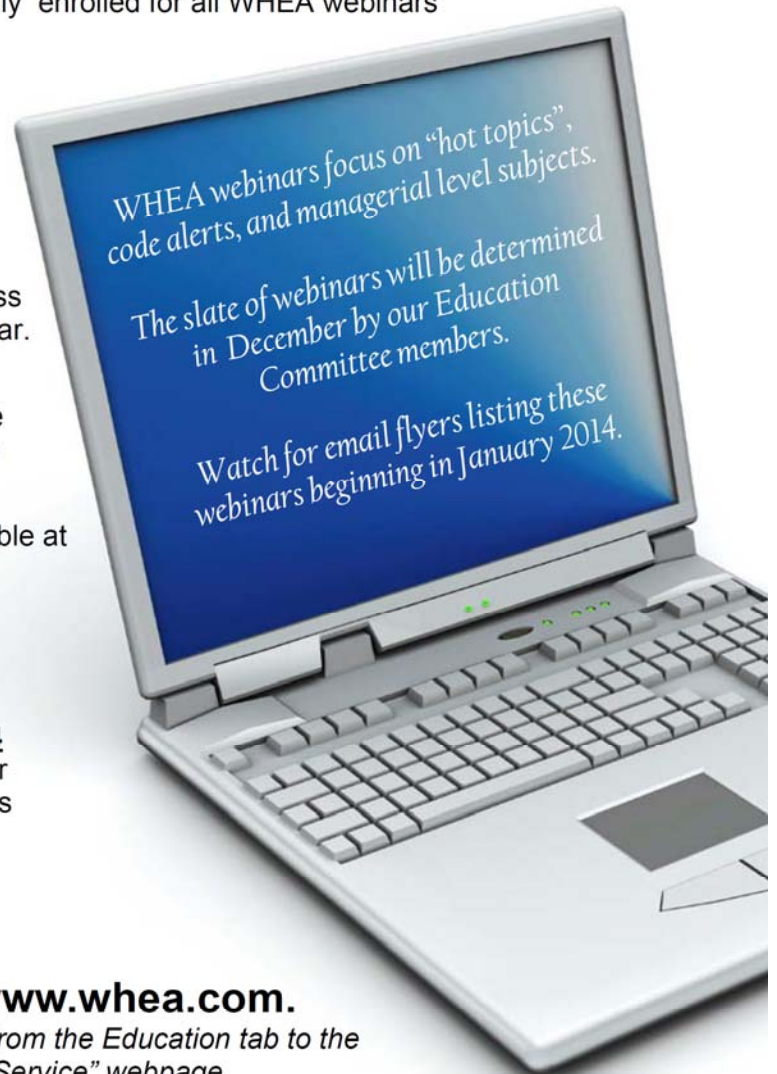
WHEA offers web-based education programs that focus on "hot topics", code alerts and management level subjects. With the Webinar Subscription Service you sign up once and will be automatically enrolled for all WHEA webinars offered in 2014.

This service ensures that:

- You will be automatically registered for all WHEA offered webinars. A minimum of four (4) webinars per year.
- One approval and payment process for all webinars throughout the year.
- Webinars are accessible from anywhere with internet and phone access; from your office or from a conference room with your team.
- Webinars are recorded and viewable at anytime throughout the year.

SUBSCRIPTION DETAILS

- \$300 annual fee.
- Service term is based on the **2014** calendar year. One connection per subscription service. Confirmations will automatically be e-mailed for each webinar.



Register online at www.whea.com.

Follow the dropdowns from the Education tab to the "Webinar Subscription Service" webpage.

If you have any questions,

please contact the WHEA Administrative Assistant at 920.779.9167.

MECH

Monthly Information



**Wisconsin MECH Program
Manager:**
James Hildebrand
414.464.3880 ext. 509
jhildebrand@luther-manor.org



Jim Hildebrand
MECH Program Manager

In 2013 we sold 33 ea. preparation manuals, 27 ea. MECH tests, grossing \$3,200.00. (Note: Completed audit, checks received/checks logged.)

In 2012 we sold 47 ea. preparation manuals, 106 ea. MECH tests, grossing \$12,240.00. (Note: Record year, Aurora required all mechanics be MECH Certified.)

All MECH applications to date have been sent to Jane Bruvold to add to the WHEA MECH member database.

Wisconsin – MECH Program Manager

Needed: Program Manager / Co- Chairs

I have been the Wisconsin MECH Program Manager for nine plus years, and am planning to retire in late 2014 or 2015. We need to find two co-chairs to run the program. I have developed a MECH Program Administrative Procedures manual that details every step of the process and it contains copies of all correspondence, forms, and reports. If anyone is interested I can send them a copy of the manual. I spend about four hours a month managing the program. I also serve on the MECH Board, we have a one hour conference call quarterly. I can be reached at 414.464.3880 X509 or jhildebrand@luthermanor.org.

Director, Facilities Operations Children's Hospital of Wisconsin

A member of Children's Hospital and Health System

Employment Opportunities

At Children's Hospital of Wisconsin, we believe kids deserve the best.

Children's Hospital is a nationally recognized health system dedicated solely to the health and well-being of children. We provide primary care, specialty care, urgent care, emergency care, community health services, foster and adoption services, child and family counseling, child advocacy services and family resource centers. Our reputation draws patients and families from around the country.

We offer a wide variety of rewarding career opportunities and are **currently seeking a Director of Facilities Operations**. The incumbent will be an active member of our leadership team providing oversight and direction to our system-wide Facilities team with a passion for creating a safe and efficient environment through inspection, repairs, and maintenance. The Director will also monitor and implement actions for compliance with CHW policies and procedures, Joint Commission requirements, and Federal, State, and local regulations and codes.

The position requires a bachelor's level degree in Engineering or a related program in addition to a minimum of five years of progressive, supervisory/management experience. Qualified applicants should also possess knowledge of hospital related codes and regulatory requirements, and have experience with engineering and maintenance of physical plant and grounds, contract maintenance, construction coordination, and safety programs.

If you want to work for an organization that makes a difference for children and families, and encourages you to be at your best every day, please apply today: www.chw.org/careers; Opening ID 23278. For questions, please contact Lindsay Teunissen, HR Consultant, at (414)337-8227.