

Wisconsin Healthcare Engineering Association Newsletter

December 2013
Volume 23, 4th Quarter



Inside this issue:

Calendar	2
In Memoriam	3
Chapter III	3
Chapter II	3
Chapter I	4
Code Committee	5
EPD Committee	7
Lunch & Learn Webinars	8
MECH News	9
Chapter IV	9
Conference Committee	10
Members Only Access	10
Chapter V	11

Presidents Message

Wow, it is December already. Time is flying and it seems like we have already had months of cold weather. On a positive note, daylight will start increasing soon and we will need to start thinking about spring. Our first board meeting of the new cycle was held on December 6th in Wisconsin Dells. New Chapter Leaders were welcomed and no time was wasted as the group got right down to business. Highlights of the meeting were that the Annual Conference in September proved to be another great success, sponsorship continues to grow, and that professional development is evolving to meet the needs of our members. Goals for 2014 are being refined and will be presented within the next few weeks.

A significant take-away from the December meeting was that WHEA



Gordon Howie
WHEA President

is in jeopardy of losing Platinum Affiliation with ASHE. One of the metrics for affiliation is for WHEA to demonstrate a 5% increase in ASHE members each year.
(continued on page 2)

2013 PLATINUM SPONSORS

The Boldt Company

J.P. Cullen & Sons, Inc.

Miron Construction Co., Inc.

2013 GOLD SPONSORS

Balestrieri Environmental & Development

C.D. Smith Construction, Inc.

Fremont Industries, Inc.

HGA Architects and Engineers

J. F. Ahern Co.

JH Findorff & Son, Inc.

Johnson Controls

Kraemer Brothers

Mortenson Construction

PBBS Equipment Corporation

Riley Construction Company, Inc.

Ring & DuChateau, LLP

Total Water Treatment Systems, Inc.

Tremco Roofing and Building Maintenance

Zimmerman Architectural Studios

2013 SILVER SPONSORS

Architectural Design Group, LLC

ASI Signage Innovations

Bartingale Mechanical, Inc.

Beeler Construction, Inc.

Berghammer Construction Corp.

Brubaker Architects, Inc.

Complete Control, Inc.

Engberg Anderson, Inc.

Eppstein Uhen Architects

Faith Technologies, Inc.

Flad Architects

Fowler & Hammer, Inc.

General Heating and Air Conditioning

GRAEF

Grumman/Butkus Associates

Hooper Corporation

Kahler Slater

Mared Mechanical Contractors, Inc.

Market & Johnson, Inc.

Medcare Products

NEI Electric

Pieper Electric, Inc.

Plunkett Raysich Architects, LLP

Poellinger Electric, Inc.

Purely Med Gas, Inc.

Samuels Group | Environments

The Samuels Group, Inc.

ServiceMaster Recovery Services

Siemens Industry, Inc.

Sika Corporation

Staff Electric Co., Inc.

Trane

President's Message (continued)

Given the state of healthcare, it may seem unreasonable to request that your organization sponsor you for both. However, the benefits of our affiliation allow us to improve our knowledge through educational offerings and waive fees for examinations. As ASHE members, we have direct access to peer-reviewed information and education focusing on codes and standards, health facility commissioning, infection prevention, planning, design, and construction, and strategies for communicating with administration. Please consider becoming a member of ASHE and take advantage of these great opportunities.

As the year winds down, I can't help but think of the changes we've seen in 2013. Although much of this change has centered on reductions, there is opportunity to fine tune what we do to add value to patient care. That being said, hopefully you can use the holiday season to relax with family and friends and to recharge a bit. Have a Merry Christmas and all the best to you for the New Year.

Sincerely,
Gordon Howie, MSPM,
PMP, CHFM
WHEA President

2014 WHEA Calendar

(be sure to check [www.whea.com/About WHEA](http://www.whea.com/About_WHEA) for an up-to-date calendar)

Thu Jan 24, 2014

Education & Professional Development Committee Meeting
Monks at the Wilderness
9:00 am to 1:00 pm

Thu Jan 9, 2014

EPD Committee "Lunch & Learn" Webinar

Thu Feb 6, 2014

Chapter II Meeting
Ahern-Sprinkler System Safety Checks

Fri Feb 7, 2014

Conference Committee Meeting
Conference Call

Thu Jan 13, 2014

EPD Committee "Lunch & Learn" Webinar

Thu Mar 6, 2014

Chapter II Meeting
Capital Fire and Security

Fri Mar 7, 2014

Education & Professional Development Committee Meeting
Conference Call

Thu Mar 13, 2014

EPD Committee "Lunch & Learn" Webinar

Fri Mar 14, 2014

Board Meeting
Glacier Canyon, WI Dells

Tue Mar 18, 2014

Code Committee Meeting
Glacier Canyon, WI Dells

Thu Apr 3, 2014

Chapter II Meeting
Fahrner Asphalt (Maint-George Polnow)

Fri Apr 4, 2014

Member Services Meeting
Glacier Canyon, WI Dells

Thu April 10, 2014

EPD Committee "Lunch & Learn" Webinar

Wed Apr 11, 2014

Conference Committee Meeting
Conference Call

Wed Apr 23, 2014 through Sat Apr 26, 2014

Region 6 Conference

In Memoriam * *Wayne Johnson*

Wayne Johnson passed to Eternal Life Wednesday, Dec. 18, 2013, age 57 years. Wayne was a past president of Chapter I, Past President of WHEA, served on numerous committees, chaired numerous committees, and led the development of the WHEA Foundation. He had served as Director of Facility Operations at Children's Hospital of Wisconsin since 1991. He would have achieved 27 years of WHEA membership this year.

Wayne was also an involved member of his community. He served as past Master of West Allis Lodge #291, Member of Scottish Rite Valley of Milwaukee- Past Most Wise Master Chapter Rose Croix, 33° Scottish Rite Mason, Three Pillars Board Member, Masonic Village on the Square Board Member, Board Member of the Scottish Rite Dyslexia Center, Council of Deliberations and Audit, Member of Tall Cedars of Lebanon, Philaethes Society and Scottish Rite Research Society.

Wayne was the beloved husband of Mary (nee Osypowski). Loving father of Leah (Jason) Limbert, Leslie (Brian) Scott, Lindsay and Angela Johnson. Dear grandfather of Nicholas, Lily, Syllas and Liam. Son of Rudolph and the late Virginia Johnson. Son-in-law of Michael and the late Evelyn Osypowski. Brother of Kathie (Tony) Grzeckowiak, Cheryl (Joe) Schwark and Renee (Mark) Glembin. Also survived by sisters-in-law, brother-in-law, nieces, nephews, other relatives and many friends.

Chapter III Report

Tom Evers, Chapter President

We had a meeting on November 7th at the Holiday Inn Appleton. Discussion revolved around the WHEA facebook page and the future potential to pay dues with a credit card.

We approved 1 new full member and 2 new associate members. We also approved one retiree member.

Also discussed was the vacant Officer at Large position, the previous officer at large stepped down and we discussed the procedure to appoint a new officer at large. We asked for anyone interested in the position at the Chapter III meeting. Bylaws allow appointment of this position.

The meeting was preceded by a presentation on electrical safety presented by Pieper Powers Safety Director, this really touched on Arc Flash and requirements.

The next Chapter meeting will be held on January 16th, 2014 and held at Aurora Baycare's Sports Medicine Center in Green Bay. The meeting will have presentations on Building Envelope by ECM Eric Larson and Infectious Control by Marge McFarlane.



Chapter II Report



*Derek Marshall
Chapter President*

Chapter II has met twice in this past quarter.

Tim Ehlers had to step down as President as he is no longer employed in

healthcare. Derek Marshall as Past President will fill the vacated position for the remainder of the term or until Tim returns.

Clarence Day was voted in as lifetime member and 3 new associate members were voted in as members which brings our total membership to 86, which is about 100 less than full strength as all dues are not in as of yet.

In the effort to give back to our chapter members, we used the chapter dues that would normally have been paid into the state to send members to both the annual conference and the December HCC program. 12 members received these free registrations and their mileage paid.



Challenging convention to deliver results.

At Boldt, we're out to deliver those things important to your construction project: budget savings, responsive production schedules, better decision-making and a positive, more collaborative customer experience. In short, we're out to deliver value.

Work with Boldt and *Realize what's possible*®.

800.99.BOLDT | boldt.com

BOLDT.

Since 1954, Fremont has been providing products and support to meet the water treatment needs of the healthcare industry.



(800) 436-1238
www.fremontind.com
Proud Gold Sponsor of WHEA

Chapter I Report



*Harley Herold
Chapter President*

Chapter I has met 4 times this past quarter.

The first meeting was Thursday, September 12 at Gateway Technical College in Kenosha. Three new members were voted in an education program by Larry Hobbs, Curriculum chair and instructor HVAC/R, Facilities Maintenance programs at Gateway Technical College. Gateway Technical College would like to set up a healthcare maintenance education program. The school would like to learn from us what our needs are so they can plan for a program to meet those needs. This meeting included a tour of their facility.

The second meeting was Thursday, October 10th. It was held at Waukesha Memorial Hospital. 4 new members were voted on and approved. There was an education program provided by Tyson Glimme, P.E., QCxP of Henneman Engineering, Inc.

Out last meeting of the year was Thursday, November 14th at J.F. Aherns new LEED Silver Certified building in Milwaukee. 2 new members were voted on and approved. The education portion was provided by Chris Kruszewski from J.F. Ahern regarding the changes in wet chem applications for kitchen hood systems and the periodic maintenance procedures that are required. We also toured Ahern's LEED Silver Certified building.

Lastly our December meeting was held at the Milwaukee School of Engineering.

The Chapter officers for 2013-2014 are:

President – Harley Herold

Vice President – Stephanie Angst

Secretary – Martin Schutte

Treasurer– Neil Jensen

Officer at Large – Allan Bassett

Junior Past President – Jeff Eckstein

Senior Past President – Ron Heimann

Our 2014 meeting plans are as follows:

January - Christmas Party Mo's Irish Pub

February -Rockwell Clock Tower

March - Johnson Controls

April - Watertown Regional Medical Center

May - Not finalized

June - Not finalized

An FYI regarding the use of Power Strips in Healthcare Settings

By William Best, WHEA Code Committee

The intent of this article is to provide general information regarding the subject matter. The author recommends seeking the opinion or services of a qualified professional or authority having jurisdiction (AHJ) to assist in resolution of specific issues or problems.



Recently, WHEA's Code Committee asked me to look into the use of power strips in a healthcare setting. Well there are NO EASY answers but, here's what I've found out to date. Products we generally call "Power Strips" may also be known as "Power Taps", "Relocatable Power Taps" (RPT), or even "Special-Purpose Relocatable Power-Taps" (SPRPT). Keep in mind that use of such devices may continue to present major challenges for long term compliance.

NOTE: Previously in 2004 and again in 2008, UL published information stating that Relocatable Power Taps with or without "hospital grade" components were not suitable for use in patient care areas.

However, after researching the internet, looking at several UL standards, and speaking to engineers at UL, I located ONE product actually "Listed" (important word) by UL for use in patient care and critical care healthcare settings using UL's "XBZN2.GuidelInfo" © 2013 UL LLC and complying with UL's "Outline for Investigation of Special-Purpose Relocatable Power-Taps, Subject 1363A". It is a product designed to be attached to an IV pole so multiple IV pole mounted pieces of equipment can be plugged in.

Other products I saw (most were well known brand names) were "Tested to UL 1363A Standards" or "Certified to UL 1363A Standards" usually by a UL competitor known as TUV.

Years ago competition was considered "restricted" when Standard makers like NFPA used wording such as "UL Listed" for products shown in their codes. Now the wording typically used is similar to "3rd party certification".

I spoke with a Joint Commission EoC standards engineer about this issue and was told that TJC has no requirement that power strips be "UL Listed" (remember UL is not the only certifying body). He also stated he had not heard of a UL listing for "Special-Purpose Relocatable Power-Tap" (SPRPT) and that what TJC is looking for is some "indication" that the power strips are of good quality and are well maintained.

Objectively then; if one has documentation that the product being used "Complies with" UL guide information and applicable standards for its use in healthcare (e.g.; UL Listed to 1363A or Tested to or Certified to UL 1363A) it may be acceptable to TJC.

Use caution here – don't forget about other AHJs.

Keep in mind those power strips, power taps, relocatable power taps, special-purpose relocatable power-taps, or whatever you refer to them as are still considered "Temporary Wiring Devices" and should be used as such. NFPA 70 NEC prohibits "temporary" wiring in lieu of permanent wiring. Exceptions are permitted for Emergencies, Testing, Construction, and 90-day events related to Holidays.

You may find compliance with this whole matter to be more difficult than it's worth.

If you feel you have no choice but to use these devices, you may want to ask yourself a few questions:

How or What do I use to justify the use of these devices?

What documentation do I have to support the decision?

Have I performed and documented a "Risk Assessment" for this use?

How do I police the use of these products?

Have I spoken with appropriate AHJs about my plans?

Facilities managers probably already know the routine to follow – so – don't drop the ball.

By going to and looking up UL's XBZN2.GuidelInfo © 2013 UL LLC (found at <http://www.ul.com>), you will find UL's requirements for SPRPTs used with medical equipment.

(continued on page 6)

Use of Power Strips

(continued)

That Guide Info includes the following and more:

Use and Installation

1. Intended for Indoor use
2. Intended to be permanently mounted
3. Integrity of the assembly is regularly verified and documented through an ongoing maintenance program
4. Intended to be provided with Hospital Grade plugs & outlets

Conditions of Acceptability

These devices require the use of a tool for mounting and removal and are intended for mounting to carts, Racks, tables, pedestals and other similar apparatus. **They shall not be placed on the floor.**

1. These devices shall be a mounted where they will not be subjected to abuse (such as acting as a bumper when they are mounted on carts, racks and the like).
2. Each SPRPT shall be provided with instructions informing the user of the proper use and maintenance. The necessary instructions shall be included on the equipment itself or on a tag attached to the supply cord of the equipment.
3. These devices may incorporate a supplementary overcurrent protection device. The effects of opening a supplementary over current protection device which may unintentionally disconnect lifesaving Medical Equipment from the main shall be considered in the end use.
 - SPRPTs employing a 15A rated plug, and SPRPTs employing a 20A rated plug are intended for dedicated line use only.

Requirements

The basic requirements used to investigate products in this category are contained in UL subject 1363A, "Special-Purpose Relocatable Power taps".

The intent of the above article is to provide general information regarding the subject matter. The author recommends seeking the opinion or services of a qualified professional or authority having jurisdiction (AHJ) to assist in resolution of specific issues or problems.

Building Wisconsin Healthcare Projects of All Sizes



Hospitals • Clinics • Long Term Care Facilities

Findorff

Contact Jeff Eckstein, AIA to learn more:
jeckstein@findorff.com | 414.587.6063

CHARACTER COMMUNITY CRAFTSMANSHIP



Healthcare & Laboratory Water Systems



- Boiler Feed Reverse Osmosis Systems
- Laboratory Water—Millipore / Barnstead
- Central Sterile & Decontamination
- Washer Decontaminator Water
- 510(k) Dialysis Systems
- Central Softeners—Dealkalizers
- 24 Hours Emergency Service
- New and Existing Equipment Training

1-800-929-2236 • jlee@total-water.com

www.Total-Water.com

Education & Professional Development (EPD) Committee Report

The Education and Professional Development committee provided three educational opportunities this past quarter.

On October 9th, Bill Lauzon presented "Reading Facility Diagrams" at the Glacier Canyon in the Dells. It was attended by 33 people and was highly evaluated by those attendees.

A webinar was held on November 13th. "Plan Review" was presented by Henry Kosarzycki with help from Bill Lauzon. A minimum of 125 people tuned in for this webinar and feedback on it was very good, both on the content and on the new question/answer format provided.

Lastly was our 4th and final "Healthcare Construction Certificate" program for the year, held on December 4th at the Marriott

in Middleton. 88 people attended and, as is usual with this popular program, the feedback came back very positive.

On November 15th we had our committee meeting and decided our 2014 slate of programs. We are introducing a completely revamped "webinar subscription service". It will now be called our "Lunch and Learn Webinar Series" and instead of only 4 webinars, there will now be 12 webinars, all held on the second Thursday of every month during the lunch hour. We are extremely excited about this opportunity for both WHEA members and non-WHEA members. The flyer for this new series is on page 8 and gives total information on pricing, registration information and the initial webinar subjects.

We will also continue to hold our "Healthcare Construction Certificate" programs in 2014, that schedule will be on the WHEA website as soon as it's set.

The Education & Professional Development committee would like to thank all who attended the programs and webinars offered this past year. We are continually evolving and looking for new opportunities to help WHEA members with their educational needs.



Jim Teunas
Co-Chair



Marc Teubert
Co-Chair



Ring & DuChateau, LLP
Consulting Engineers since 1961

HVAC • Electrical • Plumbing
Lighting Design • Fire Protection • Commissioning



...the right people, making the right choices.
414.778.1700 www.ringdu.com

Serving the Health Care Community for 65 Years



GENERAL
HEATING AND AIR CONDITIONING

3002 Perry Street - Madison, Wisconsin 53713
www.generalheating.com - PH: 608.271.3900



WHEA WEBINAR SERIES

2014

Introducing WHEA's 2014 Monthly Webinar Series "Lunch & Learn"

Every 2nd Thursday of the month
11:30 am to 1:00 pm

Available by yearly subscription only.
(This takes the place of the WHEA Annual Subscription.)

The Wisconsin Healthcare Engineering Association's Educational and Professional Development (EPD) Committee is offering 12 webinars for the 2014 calendar year for a one time, low price per computer connection.*

\$500 Regular Registration (\$42 per webinar)

\$300 WHEA Member Discount (\$25 per webinar)

NO LODGING ♦ NO OVERTIME ♦ ONE TIME PAYMENT

This is a cost effective, professional development series for facility staff, administrators and contractors. This is a fantastic opportunity to stay up to date on current issues without leaving your facility. You will receive complete session information approximately 2 weeks before each webinar.

Registration is now open at www.whea.com. Follow the drop downs under Education to "Webinar Series Registration". For the members only discounted rate, log into the WHEA members only site. You may sign up anytime during the year but the cost will stay the same - there is no individual webinar pricing. All webinars will be recorded and you will receive a link to that recording after the webinar has been presented. Even if you are not able to attend, you can still have these important updates to watch at your convenience.

REGISTER TODAY at www.whea.com!

Lunch & Learn Kick Off Schedule

- 1/9 - "Life Safety Code Intro -NFPA 101"(code layout, AHJ's, new/existing) Bill Lauzon
- 2/13 - "Occupancy & Construction Type-LSC 18/19.1"(healthcare, business ambulatory) Bill Lauzon
- 3/13 - "Means of Egress-LSC18/19.2"(exits, locking, travel distance) Bill Lauzon

Additional webinars to be presented...

- "Protective Features - LSC 18/19.3"(vertical openings, haz rms, corridors, suites, smoke compart)
- "Building Services-LSC18/19.5"(sprinkler, ventilation, electrical, med gas, elevator)
- "2012 Life Safety Code-NFPA 101" (changes in new code)

...with 6 more being developed.

The rest of the dates for these webinars are: 4/10, 5/8, 6/13, 7/10, 8/14, 9/11, 10/9, 11/13 & 12/11.

**So mark your calendar
AND REGISTER TODAY!**

* *Per Connection equals one login, one computer line, one room. You may have as many people sitting in that room watching the webinar as you wish, but you may not share your login information with any other person or facility.*

MECH Monthly Information



Wisconsin MECH Program

Manager:

Bob Orcholski

262.785.2119

bob.orcholski@wfhc.org

Chapter IV News



*Dennis Kwasny
Chapter President*

Chapter IV held our annual Christmas meeting on December 12th in Wausau. After a great catered lunch we held our business meeting. During the meeting we discussed our 2014 meeting schedule and training opportunities. Also discussed were our goals that we are working to accomplish this upcoming year. The discussed goals are to continue the mechanic level chapter training, improve member attendance, and update the chapter bylaws.

Fellow Chapter IV officers are, Vice-President – Mike Neely, Secretary – Charles Kostka and Treasurer – Dan Schrameyer.

The 2013 membership for Chapter IV consists of 46 Full Members, 32 Associate Members, 5 Retired Members, 4 Life Time Members and 1 Honorary Member.



Jim Hildebrand

A New MECH Manager

After 15+ years as the Wisconsin MECH Program Manager, I have turned the program over to Bob Orcholski, Director of Plant Operations, Wheaton Franciscan, Elmbrook Memorial, 19333 W. North Avenue, Brookfield, WI 53054, 262-785-2119, (Fax) 262-785-2446, bob.orcholski@wfhc.org

I have transferred all my MECH files, email documentation and preparation manuals to Bob. I will continue to mentor Bob as long as he needs me, he's doing a great

job. He has a lot of interest in the program and will make a great MECH manager.

Thanks for allowing the opportunity and privilege of running the program, for me it's always been about the mechanics.

I will remain on the MECH Board until Bob gets up to speed.

I will remain on the Supervisory Evaluation and Certification for Healthcare (SECH) program Committee as long as I'm needed.

Please let me know if you have any questions. Thanks!

BARTINGALE

BARTINGALE MECHANICAL, INC.
Mechanical Contractors

Northwest Wisconsin's Leading Mechanical Contractor For The Past 100 Years!

Reliable service and quality workmanship at a competitive price.

Air Conditioning • Heating
Temperature Controls • Plumbing
Process Piping • Medical Gas Piping
Service Maintenance Agreements
Hot Water & Steam Systems

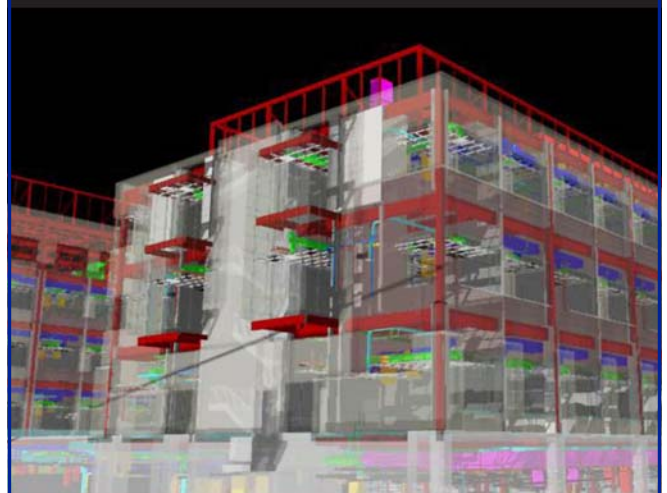
www.bartingalemechanical.com

715-835-3169

Fax: 715-835-0538 • Toll-free: 800-793-6205

2021 Oxford Ave. • P.O. Box 1027 • Eau Claire, WI

We love the details too.



Together we can make detail-driven decisions early in the preconstruction phase to ultimately allow your facility to run smoothly and efficiently.

Mortenson
construction

Visit www.mortenson.com
or contact **Brian Boecker** at
262.879.2500 to learn how
Mortenson can partner with
you on your next project.

Conference Committee Report

On Friday, October 18 via conference call the Conference Committee met to review evaluations from the 2013 conference and to begin planning for the 2014 program, which will again be held in Green Bay. Evaluations indicate that programs were well received with many programs again receiving very high scores. Positive comments were included for both the WHEA Code Committee presentations as well as the associated open question and answer program. Negative comments

were made about PowerPoint presentation slides again not matching the handouts which were very frustrating and disruptive as well as no hard copy of ASHE President Mark Kenneday's program. This will be addressed in future programs. Comments were again very positive in regard to the facilities, activities, staff support and food associated with the Green Bay location. Many commented that it was great to again be back in Green Bay.



*Mike Blackwood
Conference Chair*

Thanks to the great response by members, guests, sponsors and vendors we were able to set new records for attendance, which caused the 2013 WHEA Annual Conference to again be a great success.

ASHE President Mark Kenneday complimented WHEA on how well our organization functions and recognized WHEA as one of the strong chapters in ASHE.

SERVICES
Building Automation
Fire & Security
Energy Management
Mechanical
24-hour Full Building Services

INDUSTRIES
Healthcare
Educational
Financials
Industrial
Manufacturing
Government
Tribal Communities

Complete Control Inc.
Energy Management Specialists
Leaders in the construction trade since 1989.

715.887.4400 • Complete-Control.com • Energy@Complete-Control.com
Serving all of Wisconsin with offices in: Edgar, Sparta, WI Rapids, Madison

SIEMENS

Answers for infrastructure.

usa.siemens.com/buildingtechnologies

6737 W Washington St., Ste. 2110 · Milwaukee, WI 53214 · (414) 475-3700

Are You A New WHEA Member ? Or Current Member Without Members Only Website Access?

Email Jane at bruvold@sbcglobal.net with what you would like for a password and she will set you up with members only access. It's fast and easy.

If you do have access, take a minute to go into the database and doublecheck your listing. Send Jane any edits.

Chapter V Report

By Corey Fedie, Chapter President

Chapter V has met once this past quarter. The meeting was held October 17th at Emerald Ridge Game Farm. Four new members were voted in. This meeting involved a business meeting with an education session and skeet shoot after the education session. The 2014 meeting schedule and goals were discussed. The 2014 schedule is listed below and the goals were not finalized. The educational session was provided by Jeff Urlaub on "Sustainability and Designing Health Care facilities that meet the 30% reduction over ASHRAE guidelines". It was well received.

2014 Meeting Dates, Location, Education:

February 20th, Ahern Facilities in Menomonie WI, Security/Safety

April 17th, Mayo Clinic Health-Eau Claire, full day Mech. Training

THERE'S NOTHING LIKE PROJECT PEACE OF MIND.

Job site morale. Project productivity. Customer confidence. These are the things that are included in Faith Technologies' full-service electrical and specialty systems contracting. Because when you get right down to it, what we do isn't about AutoCAD drawings or 10 GIG cables. It's about keeping you safer, more efficient and more confident at work.

Learn more at faithtechnologies.com

FAITH TECHNOLOGIES
ELECTRICAL CONTRACTOR
IT'S ABOUT CONFIDENCE. YOURS.

June 19th, (Golf outing) Barron WI, TBD

August 21st, Spooner Health in Spooner WI, TBD

October 16th, Whispering Emerald Ridge in Menomonie WI, TBD

Possible education at the TBD sites are Retro Commissioning, Boilers/Burners and Emergency Preparedness.



Johnson Controls is proud to be a Gold Sponsor for Wisconsin Healthcare Engineering Association

Johnson Controls creates smart environments that improve the places where people spend most of their time. Whether you're at home, in a car, or in an office or workplace, chances are there's a Johnson Controls product or service nearby, helping to make a more comfortable, safe and sustainable world.

For more information please contact your nearest office:

Appleton 866.854.4713
Madison 866.862.0458
Milwaukee 866.825.8865



Because Knowledge Does Make a Difference

Ahern holds **34% more** WHEA Healthcare Construction Certificates than its Closest Competitor*

*Source: WHEA HCC Renewal List

AHERN 800.532.4376 | www.jfahern.com